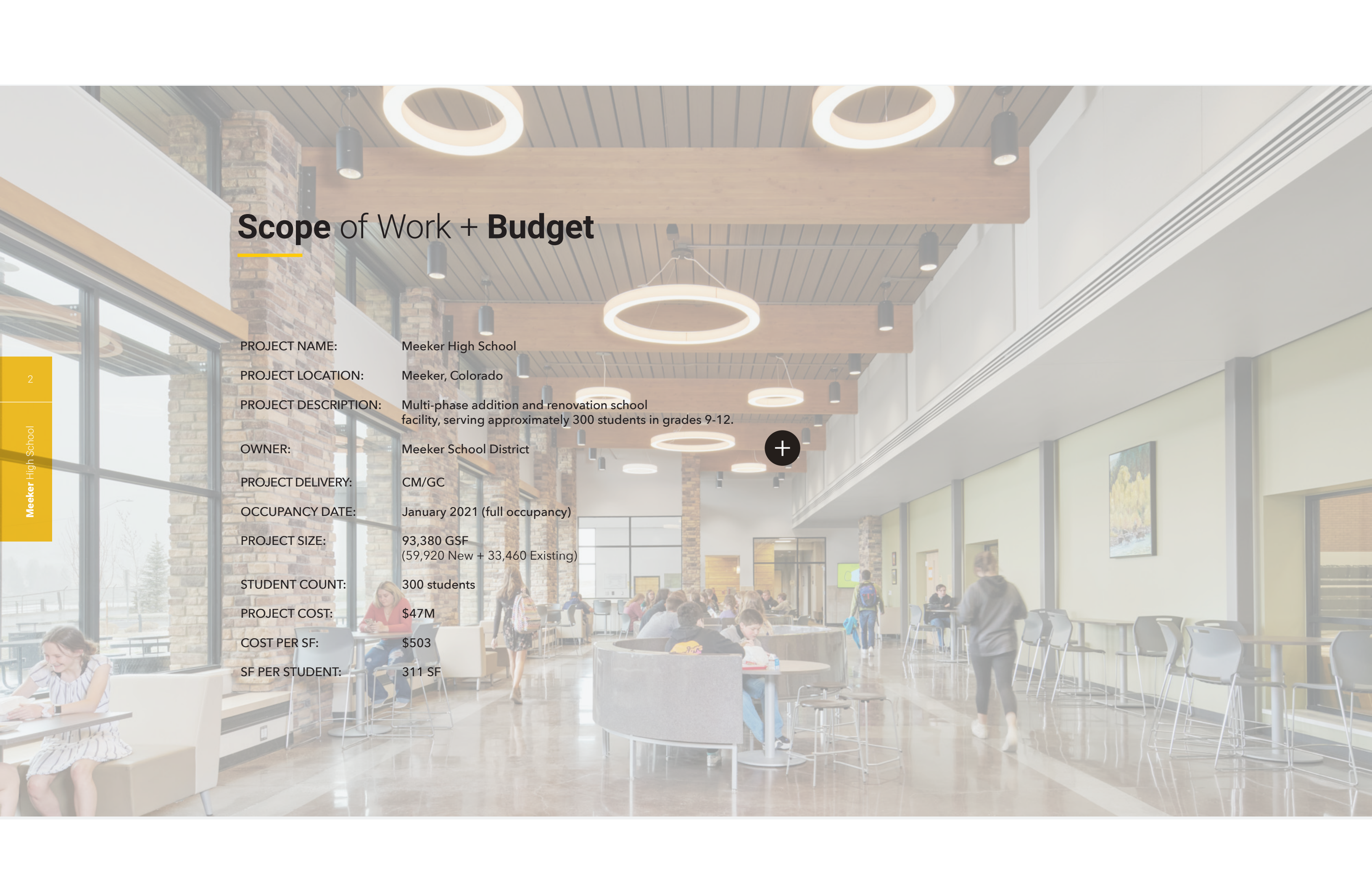


MEEKER HIGH SCHOOL

Meeker, Colorado





Scope of Work + Budget

PROJECT NAME:	Meeker High School
PROJECT LOCATION:	Meeker, Colorado
PROJECT DESCRIPTION:	Multi-phase addition and renovation school facility, serving approximately 300 students in grades 9-12.
OWNER:	Meeker School District
PROJECT DELIVERY:	CM/GC
OCCUPANCY DATE:	January 2021 (full occupancy)
PROJECT SIZE:	93,380 GSF (59,920 New + 33,460 Existing)
STUDENT COUNT:	300 students
PROJECT COST:	\$47M
COST PER SF:	\$503
SF PER STUDENT:	311 SF

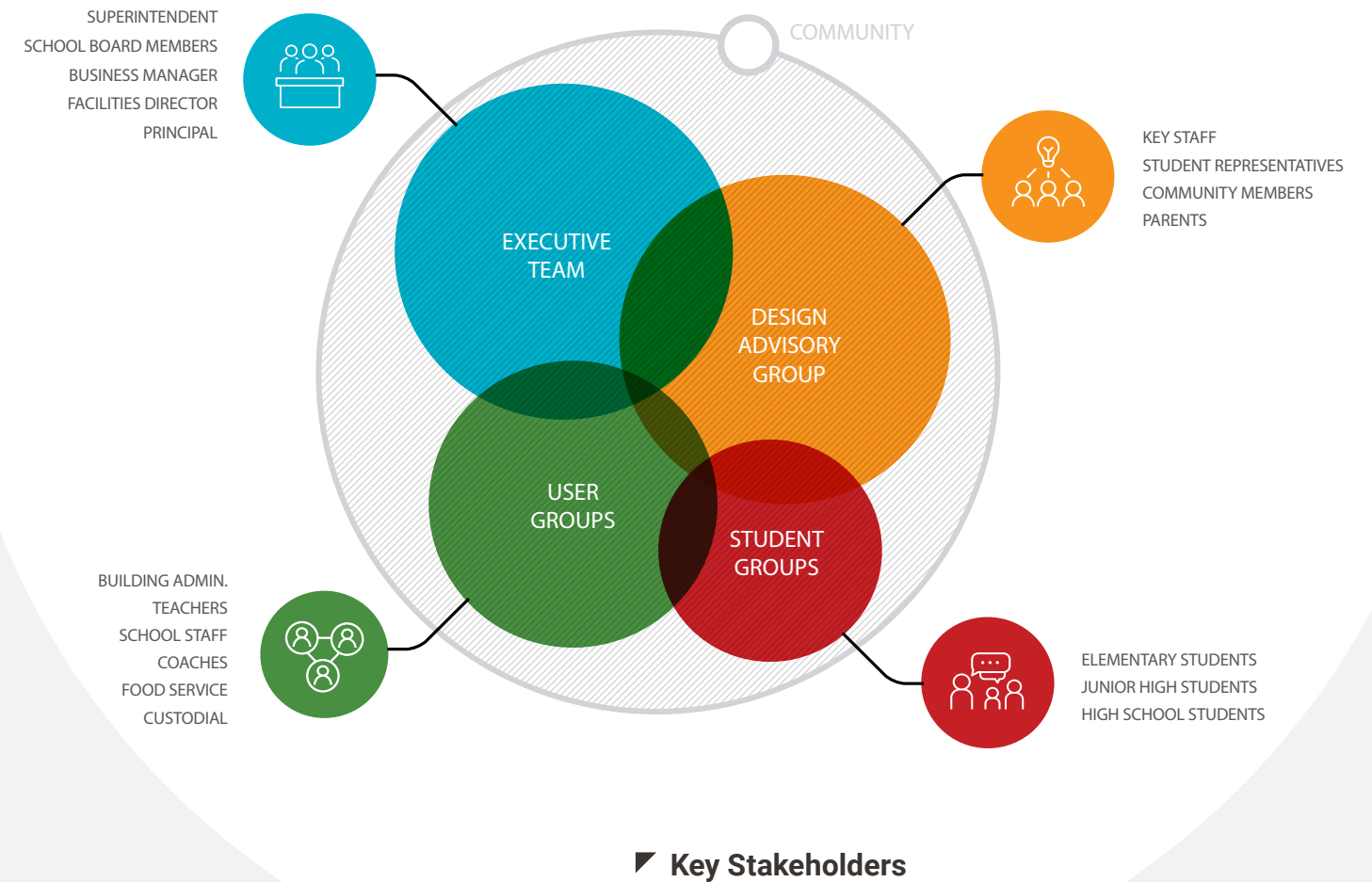


Planning Process + Executive Summary

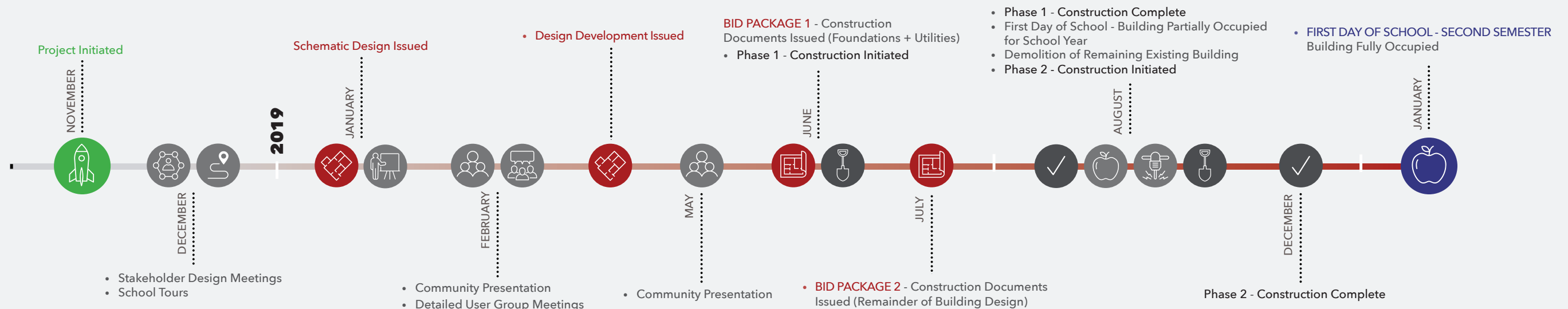
The Meeker School District passed a bond in 2018 that supported the near replacement of the existing high school along with improvements to the transportation facility. As with many communities, the high school had served as the heart of many community and school gatherings in its 50+ years. Right from the start, honoring the history and preserving the heritage while reinventing the academic areas to meet modern standards became core drivers.

The existing gymnasium and auditorium were preserved and renovated, while all remaining parts of the existing facility were demolished and replaced. The extreme slope of the site and years of drainage issues were resolved alongside severe deficiencies in student safety on site. The critical CTE programs were given new spaces and infrastructure to support the continually growing programs, and classroom spaces were centralized and connected, both physically and visually. All of this was done while the campus was fully occupied!

The result is a fully daylit facility designed to bring 21st century student-driven and broad-spectrum education curriculum to the Meeker students, bringing along with it the pieces that reinforce what it means to be a Meeker Cowboy.



Project Timeline

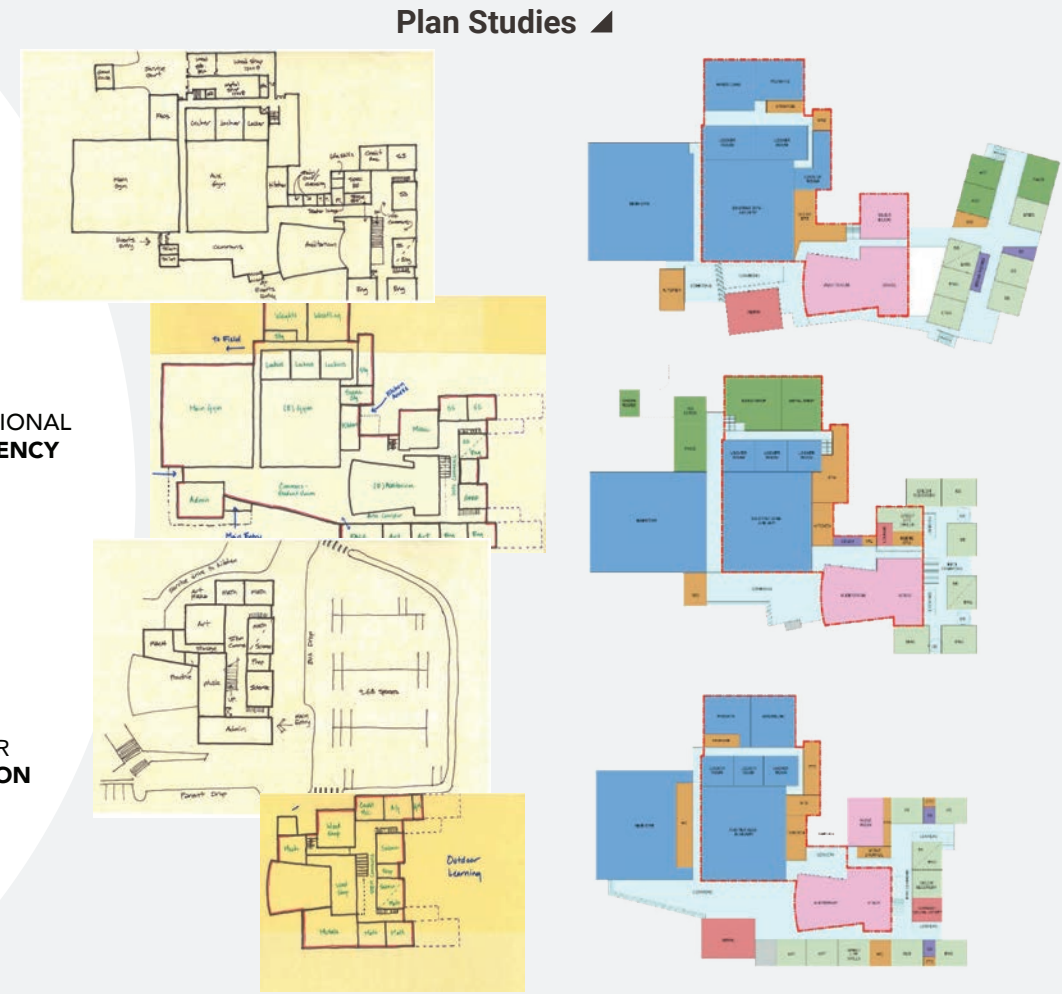
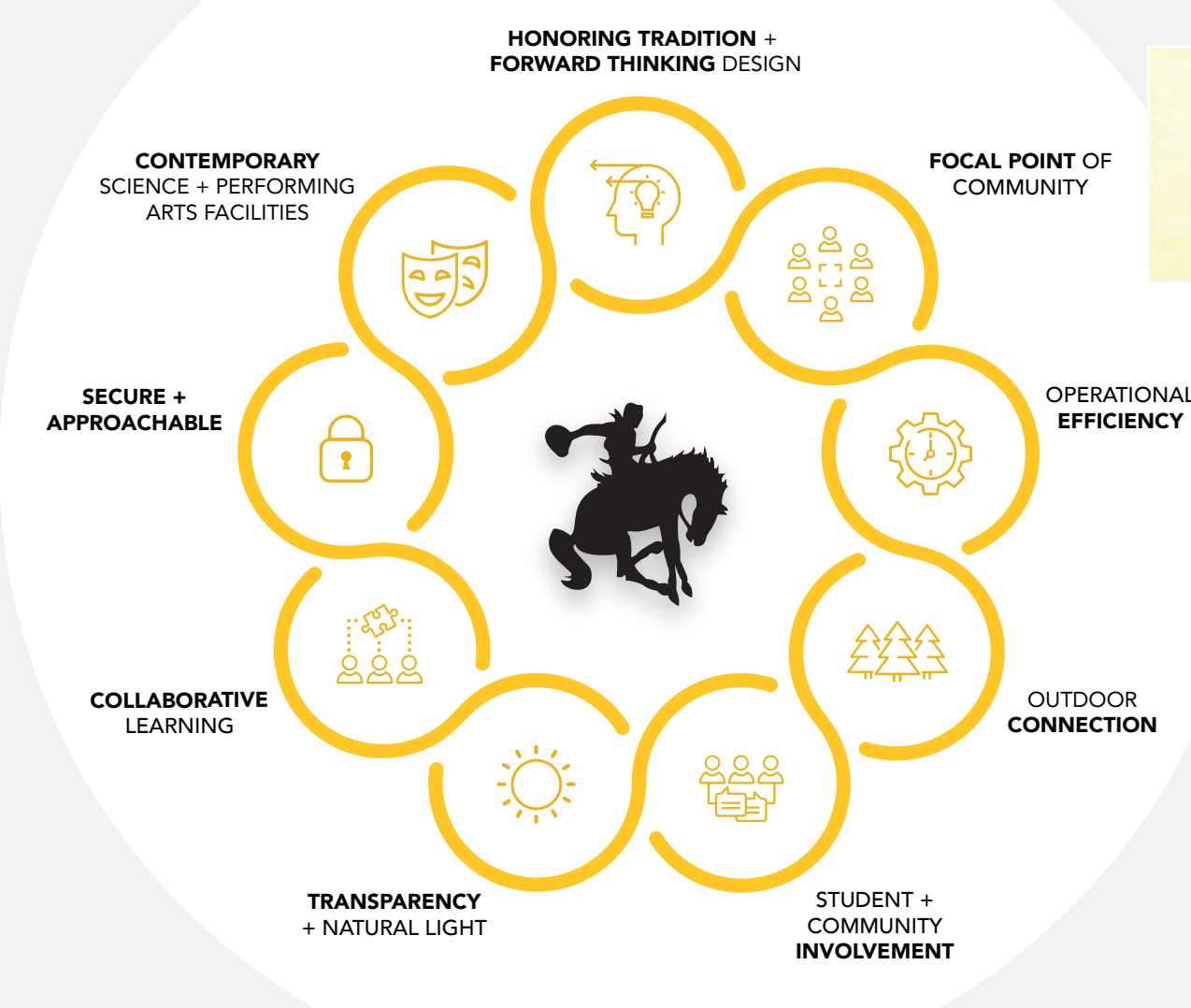


School + Community Engagement

The design team created an authentic and thorough partnership with not only Meeker School District, but with teachers, staff, community members and above all students to ensure all voices were represented equally and inclusively. This partnership was expressed most deeply through the work of the Design Advisory Group, who was responsible for not only being ambassadors of the project but also for defining the core values that would define project success. Regular meetings throughout the entire project allowed true consensus building along with transparent decision-making while also ensuring the project was a culmination of the vision of this community.

The desire to honor where they have been while looking to the future can be found in the proud display of heritage items and in the thoughtful re-use of the existing auxiliary gym that brought to life the much needed contemporary CTE spaces. Large windows, the dining patio and the direct access to the outdoors from the academic wing provides the connection to the outdoors and a large daylit academic commons provides interactive and connected student space throughout the day.

The work of this multi-generational and community based DAG group, above all, makes this school of and by Meeker, continuing its proud tradition of being a focal point and gathering spot for all.



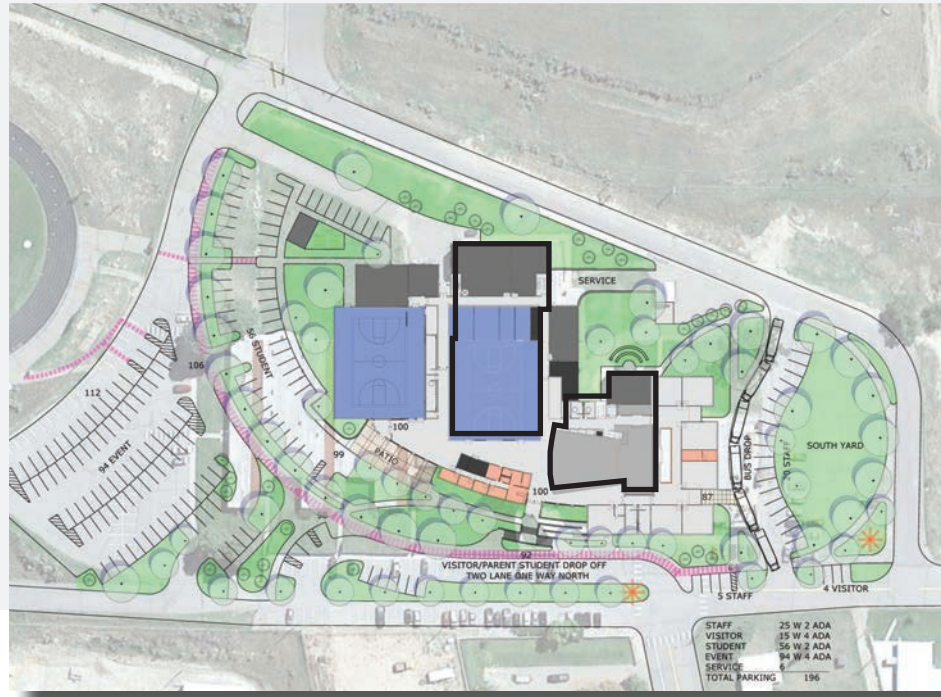
Design Advisory Group



Existing Site Plan



Site Plan Study



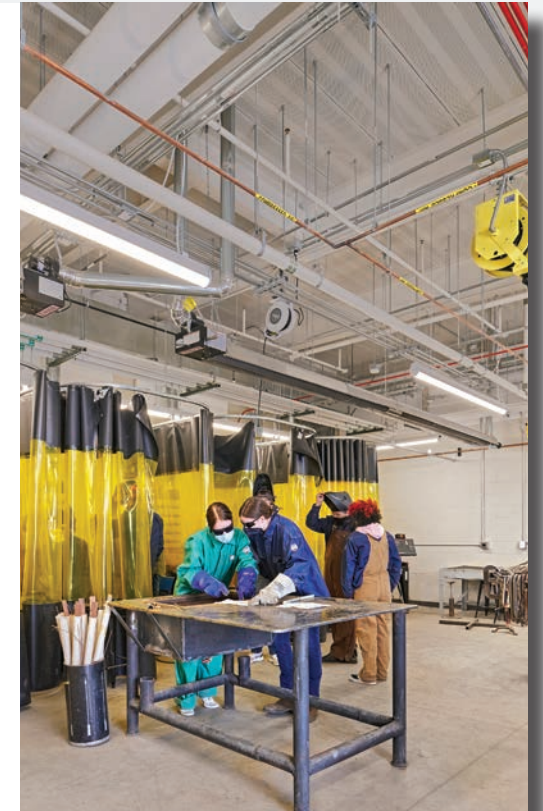
Educational Environment Design + Results

At the very first meeting for this project, the intention was made clear - this school needed to provide a modern and complete educational environment for all of Meeker's high school students. This set the course for the following three design outcomes:

- The creation of a centralized and connected academic core that included life skills programming
- Robust CTE programming that reflected the community in which the students lived
- Finding the in-between spaces and utilizing them to truly make this a place for the students

Where the crumbling wood shop once stood is now the two story academic commons that vertically connects classrooms with a layer of transparency that provides a complementary horizontal relationship. Daylighting permeates the building, existing areas and new, from science lab to STEM lab and Family Sciences to the Metals Shop and the gymnasiums. The integration of Special Education within the core academic wing ensures inclusion, and availability of various touch down spaces for students outside of the classroom invites connection and collaboration. The completely renovated auditorium continues a longstanding collaboration with the local theater community and the right-sized new gymnasium supports competition at the highest levels.

Allowing for future growth through careful consideration of classroom size and modular spacing means that these rich learning environments will thrive long into future, with the new Meeker High School positioned to provide modern education for many generations to come.



Educational Environment Design + Results

Main Level

- 1. Administration
- 2. Cafe Commons
- 3. New Gymnasium
- 4. CTE Classrooms
- 5. Art
- 6. Existing Gymnasium
- 7. Existing Auditorium
- 8. Academic Commons

Cafe Commons



New Gym



Academic Commons



CTE Classroom

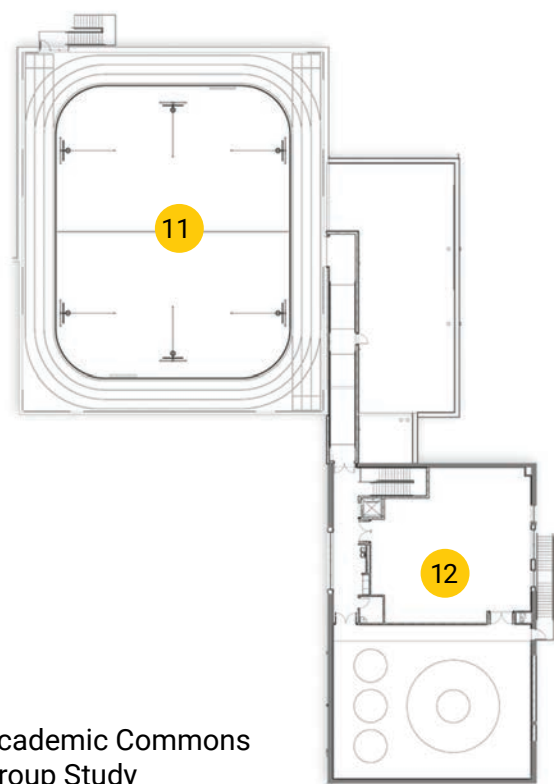


Renovated Auditorium

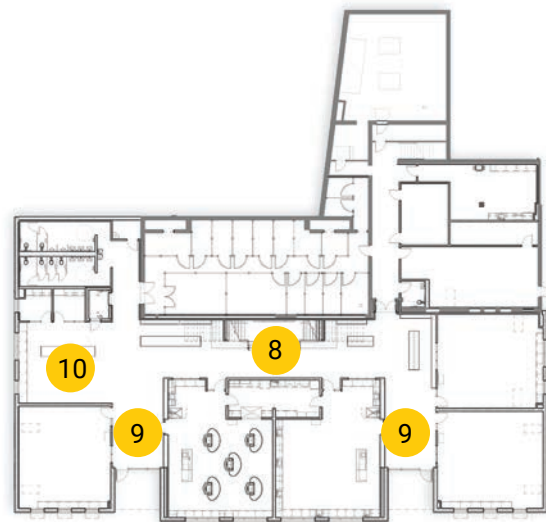


Educational Environment Design + Results

Upper Level



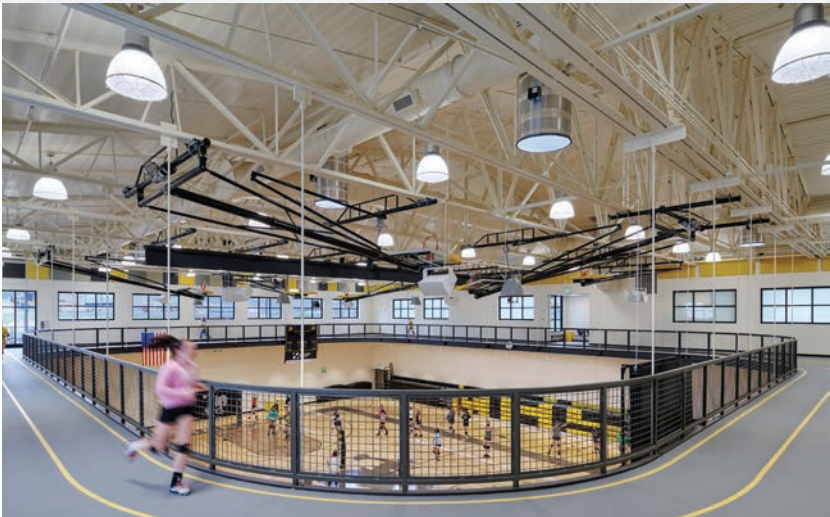
- 8. Academic Commons
- 9. Group Study
- 10. STEM Lab
- 11. New Gymnasium Running Track
- 12. Weights and Wrestling



Lower Level



New Gym



Stem Lab



Group Study





Main Street



Meeker High School



Meeker Dome



Farming and Ranching



White River

Physical Environment Design + Results

Located along the White River and at the base of the famous Flat Top Mountains in northwest Colorado, Meeker is unique not only for its rich landscapes but also for its close knit farming and ranching heritage.

From main street to the mesas, the inspiration for the design had a vast palette from which to draw inspiration. Driven by the desire to ensure this school fit its context both internally and externally, forms, materials and colors were chosen to reflect the local textures, tones and vernacular.

Physical Environment Design + Results

View from East



Main Entry



View from South



Old Main Entry



Site Plan

- 1. Main Entry
- 2. Dining Courtyard
- 3. Parent Drop-off
- 4. Bus Drop-off
- 5. Staff Parking
- 6. Vocational Arts Yard
- 7. Staff and Visitors Parking
- 8. Student Parking
- 9. Existing Football Field and Track

Physical Environment Design + Results



Image courtesy of The Herald



MEEKER HIGH SCHOOL - Paint & Wall Accent Plans

Heritage Hall (base bid)

Heritage Hall (alternate design)

Commons

Reception Wall (base bid) OR

Gym Walls

Locker Room Walls



Community Environment

Perhaps the most common thread that tied the project together, and stated as a core value, was the importance of preserving and celebrating the heritage of this school and community. With the original school constructed over 70 years ago, there were years and generations of families who created memories within its walls. From the senior class gift of the sheet metal 'M' on display on the side of the auditorium, to the academic and athletic championships and achievements, to the auditorium being the only theater venue within 75 miles - these items were an inherent part of the Meeker High School identity. The core of what it means and feels like to be a Meeker Cowboy needed to be visible, creating a cohesive spirit and showcasing their pride.

With the new addition encircling the existing auditorium, a new home for the 'M' was found in the newly created two story academic core. In its place on the exterior a beacon of Cowboy pride was installed in the form of the mascot that lights up at night. The decades of trophies and plaques were culled through and a multi media display - the Heritage Hallway - was created along the corridor leading from the main entry to the new competition gymnasium as a reminder to all visitors how accomplished these students have been throughout the years. Collaboration with the local theater companies on the renovation of the auditorium resulted in a venue in which students can thrive as they master performing arts as well as continue to be the arts hub for the community. The new running track at the new gymnasium has its own separate community entry for use by locals during the school day, providing safe separation between visitor and student. And, throughout the building school colors and symbolism can be seen reflected in materials and furniture as the most subtle of reminders of where you are.

These are but a few examples of the care the team took in carrying the past forward. In the end, the school is a modern educational facility that directly reflects the partnership, identity and pride that runs so deeply through the Meeker community.

Relocated 'M' Signage



School Pride



Heritage Hallway



Renovated Auditorium



Sustainability + Wellness

The very first design decision made for the project came from the drive and intention to preserve any portions of the building that could be reused in the quest to provide a safe and modern school facility. Saving the existing gymnasiums and auditorium not only set the foundation for sustainable design thinking, it also acknowledged the core value of honoring tradition by way of saving those spaces where some of the greatest moments for students and community have occurred.

The layout of the new classroom wing addition was in response to the other core value of capturing natural lighting wherever possible. With the incorporation of the large light well within the academic commons, the passively controlled picture windows at the commons, supplementary tubular daylighting devices, and the clerestory windows within both the new and existing gymnasiums, daylighting is provided to over 90% of all regularly occupied spaces within the building. The daylighting design combined with the following other energy savings elements led to a facility that is expected to provide a 23.2% annual energy cost savings over the 2015 IECC Standard Reference Design:

- Abuilding envelope that is not only durable but constructed to exceed energy code required U-values by 10% minimum
- LED lighting throughout
- Packaged hot water VAV system with 96.4% high efficiency boilers at classroom areas
- Energy recovery ventilators

With this project replacing a 60+ year old cold, dark and rigid facility, an eye toward maximizing student and staff wellness underscored all design intent. Operable windows were provided in almost all occupiable spaces, and there are numerous areas throughout the facility to support individual respite. Special emphasis was provided on ensuring year-round access to wellness activities, resulting in a gymnasium with a mezzanine level running track and a state of the art weights and fitness room.

Art Classroom



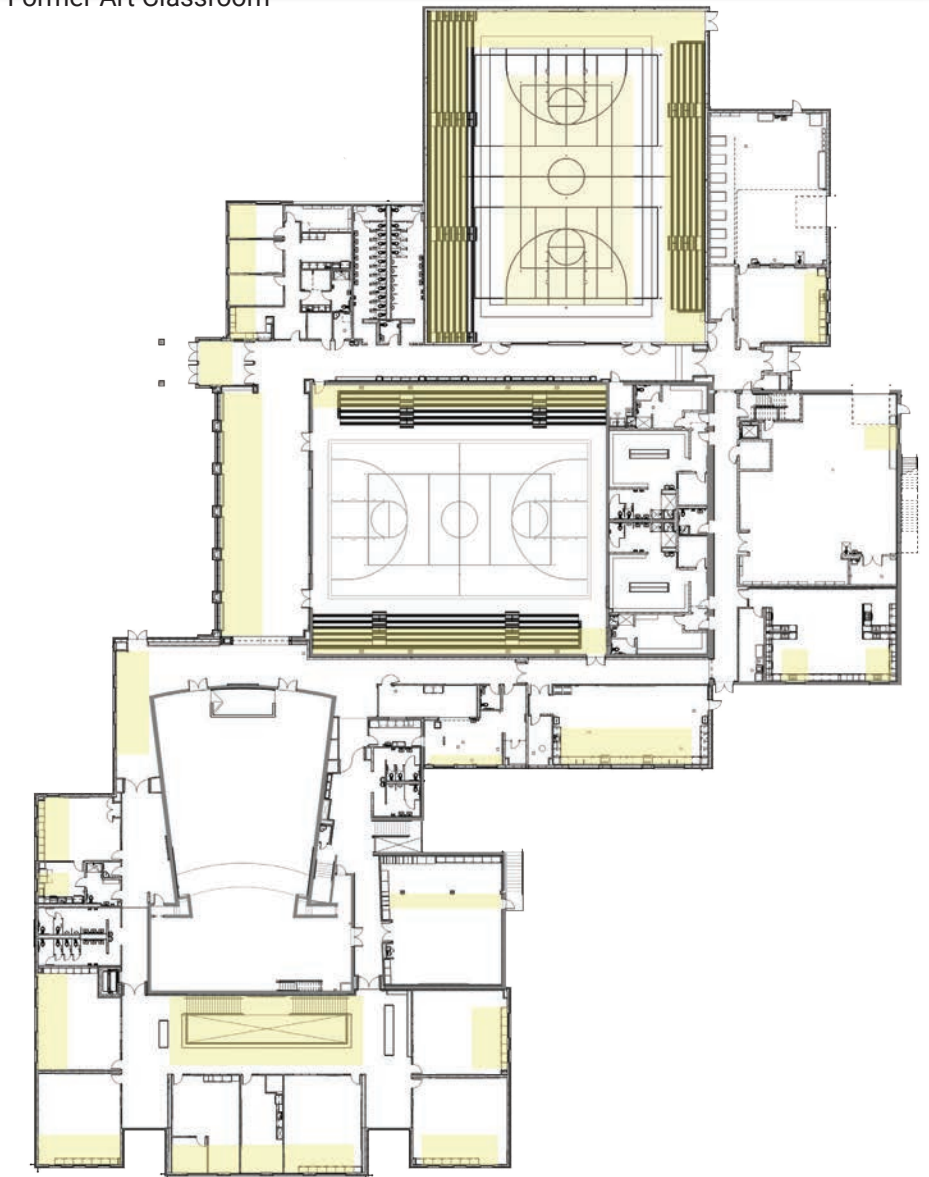
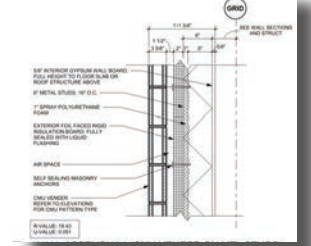
Fitness Area



Respite + Outdoor Connection



Former Art Classroom



MAIN LEVEL - DAYLIGHTING ZONES

“Because of the community interest in our project, our Design Advisory Group included many individuals with diverse opinions regarding what should be included in the project. The design team did a phenomenal job of integrating various opinions into the final design of the building. Once again, their flexibility and innovation were evident. The Design Advisory Group meetings were conducted with utmost transparency where extremely sound logic was displayed in determining which design features were included.”

- Chris Selle, Meeker School District Superintendent

