

2021 LEolutions Design Award | Project of Distinction

Sherwood High School

SHERWOOD SCHOOL DISTRICT | SHERWOOD, OREGON



Table of Contents

Executive Summary	3
Scope of Work & Budget	4
School & Community Research and/or Engagement	6
Educational Environment Design	8
Physical Environment Design	9
Results of the Process & Project	16
Sustainability & Wellness	18



Executive Summary

The new Sherwood High School has become a beacon of community pride and a testament to the District's commitment to cultivating rich academic experiences.

As the design team worked alongside District leaders, stakeholders, and students to strengthen relational and academic connections, they prioritized visual transparency and adjacencies throughout the school. These design solutions align with contemporary pedagogy and foster effective transitions between different areas of study. Flexible furnishings and abundant technology ensure students can effectively move beyond their classrooms and embrace the entire campus as an invaluable learning environment.

Located on a sloped site with views of the Cascade Mountain Range and Mt. Hood, Sherwood High School was thoughtfully integrated into the existing grade. Vital program elements exist on multiple levels of the building, ultimately creating intersections and synergies between components. The design team organized the building around a conceptual “cascade of spaces” to provide a series of centrally located interior and

exterior spaces that support student gathering, social interaction, and a meaningful sense of community across the campus.

Regardless of an individual's aspirations, interests, or academic journey, Sherwood High School represents a place where every student will feel empowered to engage with their peers, their education, and the world around them.



Arrival at Main Entry

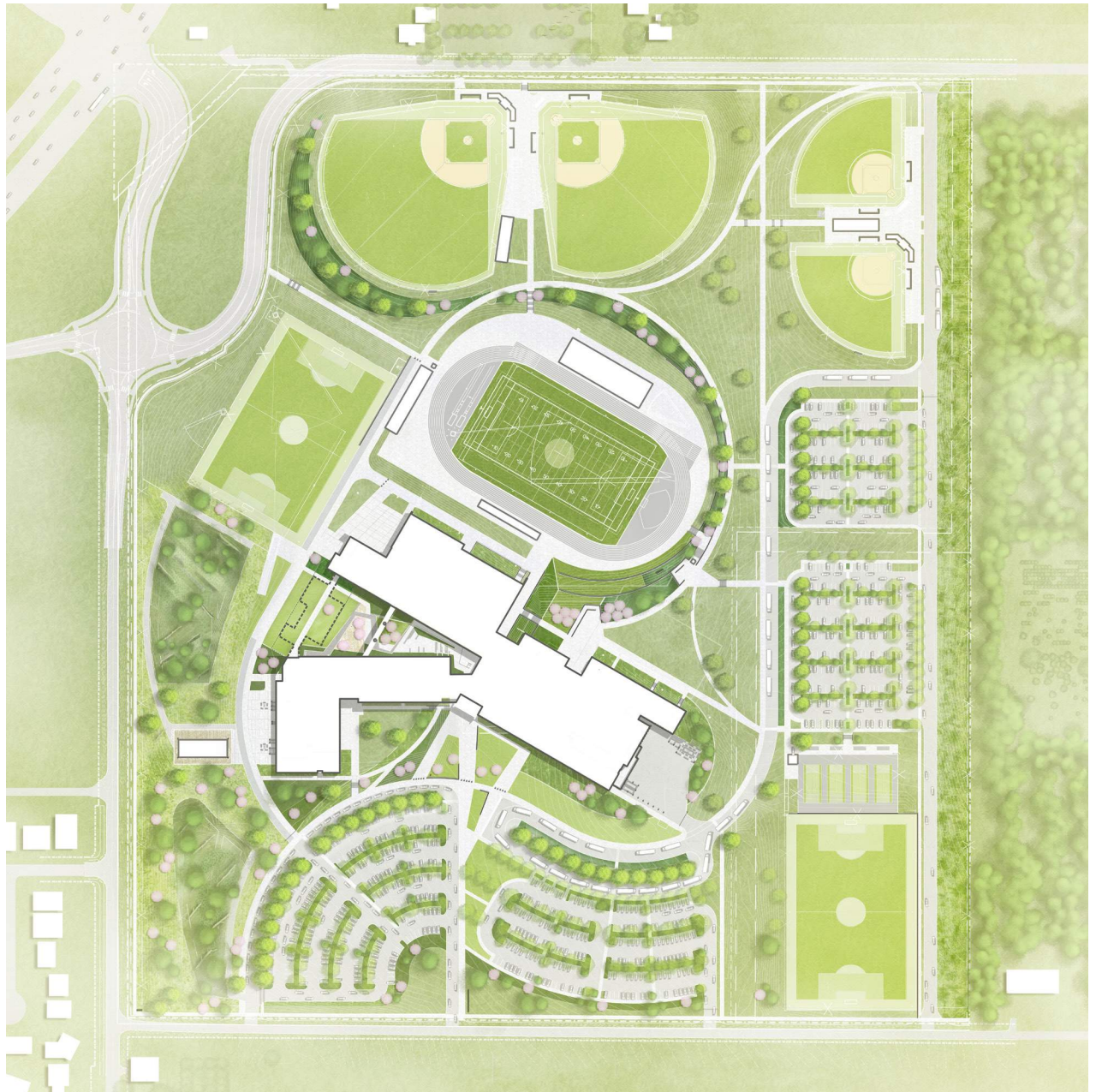
Scope of Work and Budget

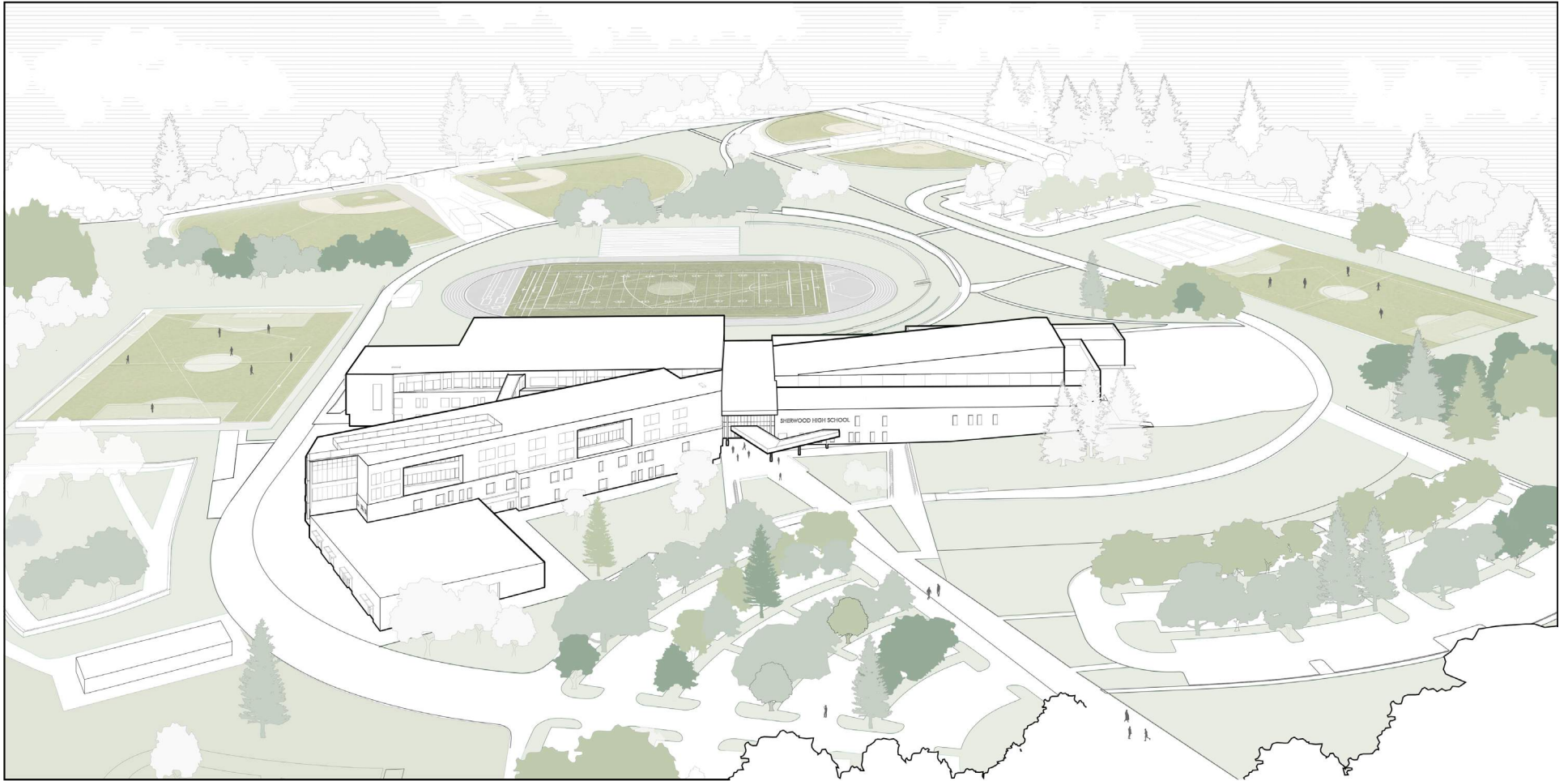
In the fall of 2016, the Sherwood community passed a \$247.5 million capital bond to fund a comprehensive District-wide transformation.

INVESTING IN SHERWOOD'S FUTURE

The District designated \$158 million towards the design and construction of a new Sherwood High School on a 73-acre campus. As the cornerstone of the bond, the resulting 360,000 SF school has the capacity to support 2,400 students and represents the community's belief that local students deserve exceptional learning environments.

Rendered Site Plan





Rendered Aerial View

School & Community Research and/or Engagement

Sherwood is a rapidly growing residential community within Washington County; the city is located just southwest of Portland, Oregon in the Tualatin Valley. Sherwood is home to approximately 19,000 residents and has been ranked as one of the *Top 10 Best Cities for Families* by Family Circle Magazine and as a *Best Place to Live* on multiple occasions by Money Magazine.

ACHIEVING A COLLECTIVE GOAL

The Sherwood School District serves approximately 5,000 students and like the city itself, is continuing to grow. Recognizing the trajectory of the District's growth, local residents were eager to address current overcrowding at the existing high school, accommodate future growth, reduce the District's reliance on portable classroom buildings, and significantly increase the size of athletic fields for school and community use. Through the passage of the 2016 bond, the Sherwood community proudly committed to replacing their existing high school with an innovative facility on a dynamic site with spectacular views of Mt. Hood and the surrounding wooded landscape.



Student Design Session



Community Workshop

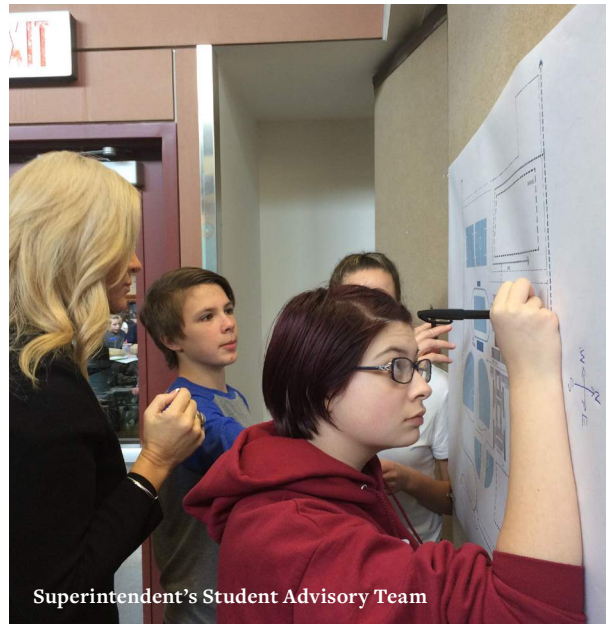
ROBUST, MULTI-FACETED ENGAGEMENT

Working closely with the District, the design team co-created the following engagement strategies to ensure the community's new high school would reflect their values, support their aspirations, and – perhaps most importantly – honor the promises made in the bond:

- Facilitate weekly design meetings among board members, administrators, students, and educators
- Lead monthly advisory meetings and classroom sessions developed exclusively for various student groups
- Host open community workshops to engage in discussions and gather input
- Utilize regularly scheduled staff meetings as an opportunity to share updates and collect insight
- Publish regular design and construction updates throughout the duration of the project via a dedicated District bond website



Design Committee Meeting



Superintendent's Student Advisory Team

The resulting 73-acre campus has become a beacon of community pride and a testament to the rich academic experiences the District strives to cultivate. Working alongside District leaders, stakeholders, and students, the design team prioritized visual transparency, adjacencies, and the development of connections throughout Sherwood High School to strengthen social and program relationships. From robust fine and performing arts opportunities and state-of-the-art career technical education spaces to rigorous academic resources and extensive athletic facilities, generations of Sherwood High School students will find a place where they belong.

Educational Environment Design

In order to align the design of the high school with the District's goal to engage all students, the design team developed spaces that would foster comprehensive, integrated learning opportunities.

GATHER, COLLABORATE, EXPLORE

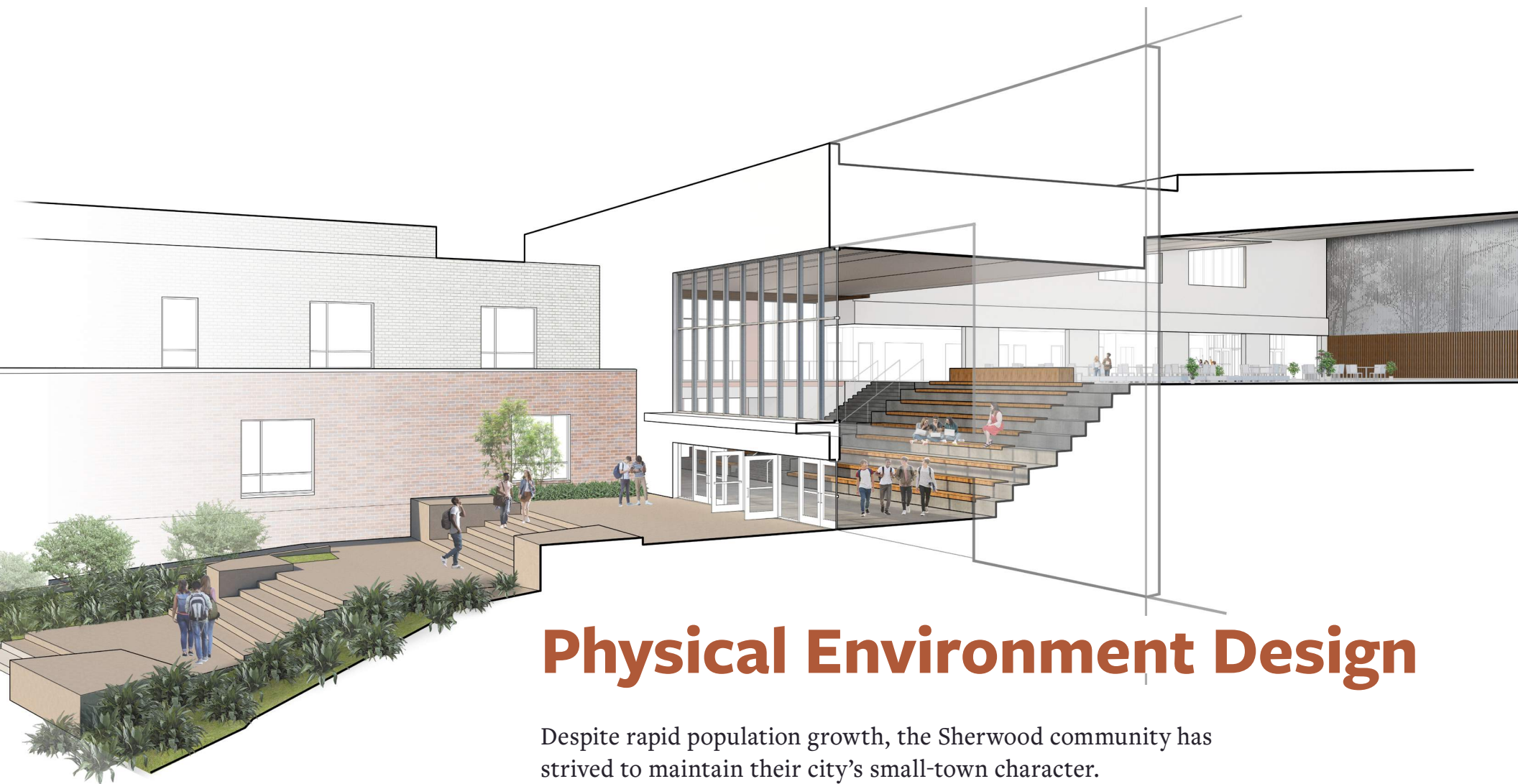
Educators and students can move fluidly between spaces for direct instruction, collaboration, exploration, and individual study in such a way that learning is

uninterrupted. Complementary spaces are connected visually and physically to facilitate movement, foster effective transitions between areas of study, and support adult supervision. Bands of transparency further connect instructional spaces to collaborative zones, as well as to circulation areas and the exterior. Learning stairs and other gathering areas provide visible opportunities for performance, presentation, and exchange.

At Sherwood High School, learning opportunities and social activities are intertwined. Instead of perpetuating the concept that students must separate their interests and social lives from their academic endeavors, the

design of the new school integrates learning and socialization in a way that more accurately reflects everyday life. Spaces designed to support a variety of activities are distributed throughout the school, ensuring they're visible, accessible, and well utilized. Flexible furniture also enables various learning models and reinforces the building's adaptability. Similarly, technology infrastructure ensures students can effectively move beyond their classrooms and embrace the campus as an invaluable learning environment. Abundant connections to the scenic Sherwood landscape paired with orientation of primary axis towards Mt Hood and other distant landmarks prompt further engagement with the campus and the world.





Cross Section Through Courtyard,
Commons, and Cafeteria Above

Physical Environment Design

Despite rapid population growth, the Sherwood community has strived to maintain their city's small-town character.

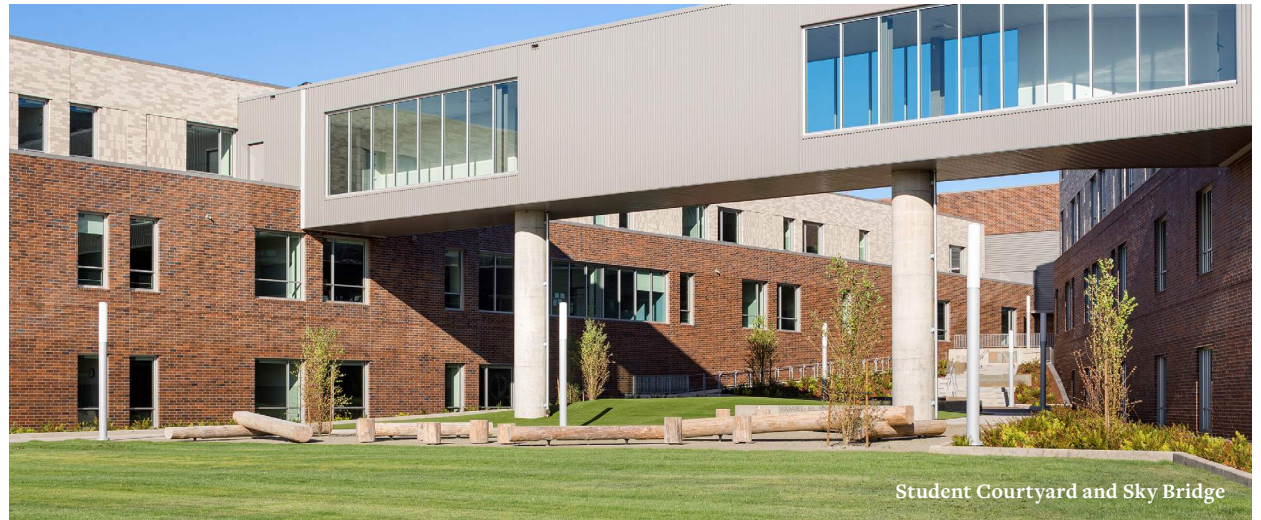
A BIG SCHOOL FOR A SMALL TOWN

The design team worked to break down the scale of the high school to align with Sherwood's self-image. The resulting design features stepped building masses clad

in contrasting bricks, all of which were manufactured locally with regional materials. While the darker bricks help to ground the building in the landscape, the lighter colors serve to punctuate and decrease the visual scale of upper volumes.

THE SCHOOL'S RELATIONSHIP TO THE SITE

The building is sited to work with the significant topographic elevation change, placing major programmatic destinations – including the entry, cafeteria, gym, and library – at different floor elevations. This placement drives sectional connections between programs and activities and facilitates simultaneous use. Movement throughout the school is characterized by a sequence of interrelated moments that link back to major destinations such as Cascade Point, the library, and the cafeteria; these connections provide opportunities to experience spaces that are bathed in sunshine and connected to both local views and distant landmarks.



Student Courtyard and Sky Bridge



Student Courtyard

INVALUABLE ACCESS TO THE OUTDOORS

Sherwood High School's large and centrally located courtyard was designed in response to students' desire to have a safe way to access to the outdoors while on campus. The courtyard serves as a consistent reference point as students navigate the school, reminding them of the balance between natural and built environments.

JUXTAPOSITION AND BALANCE

Visual connections between interior and exterior program areas inform students' experience. For example, academic areas, such as the library, are informed by framed views to outdoor athletic fields. The juxtaposition – and balance – of academic and athletic, artistic and scientific, and poetic and pragmatic pursuits are central to the Sherwood High School experience.



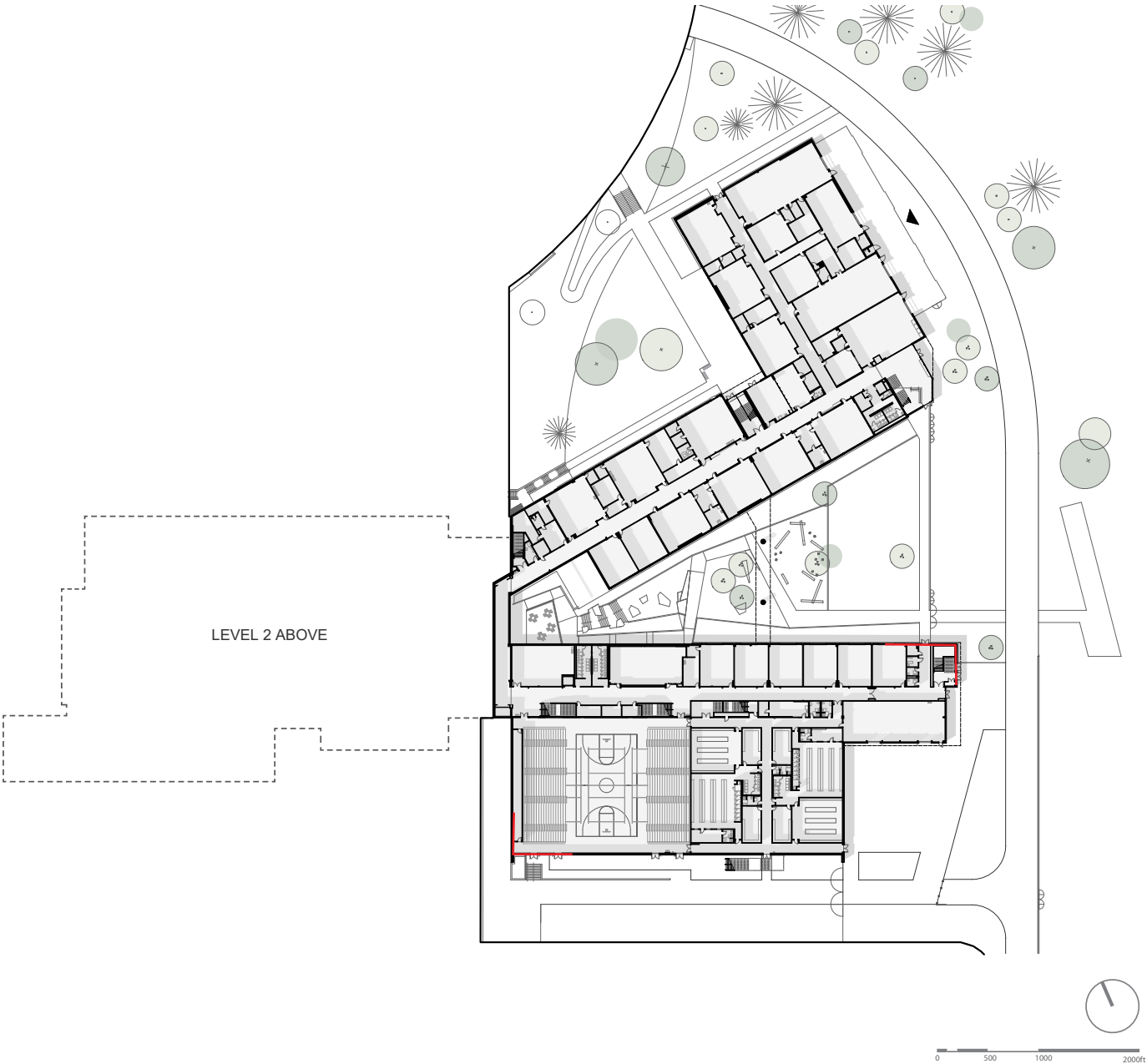
Library Rendering



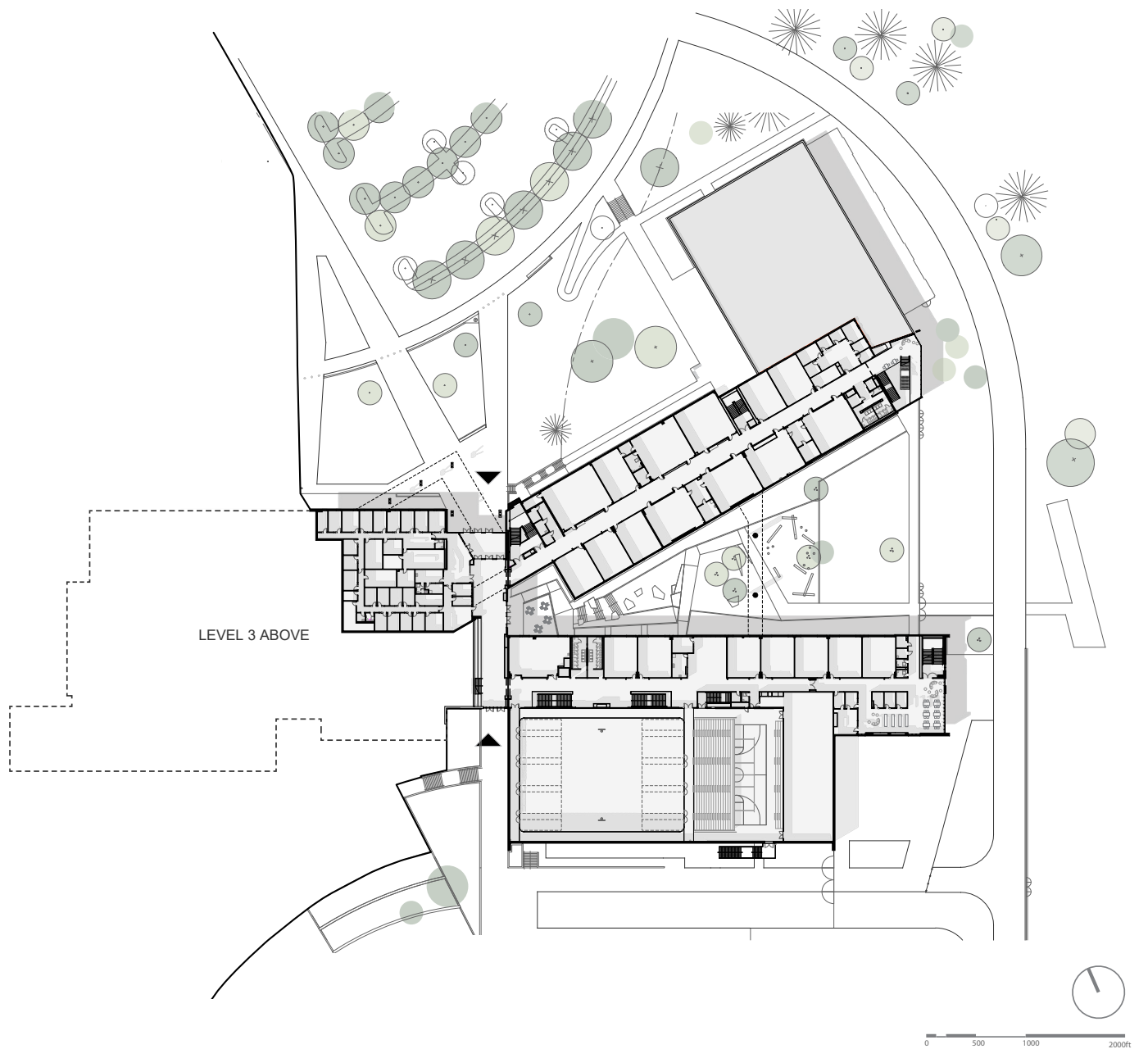
Cascade Point, A Four Story Atrium with Views to Mt. Hood

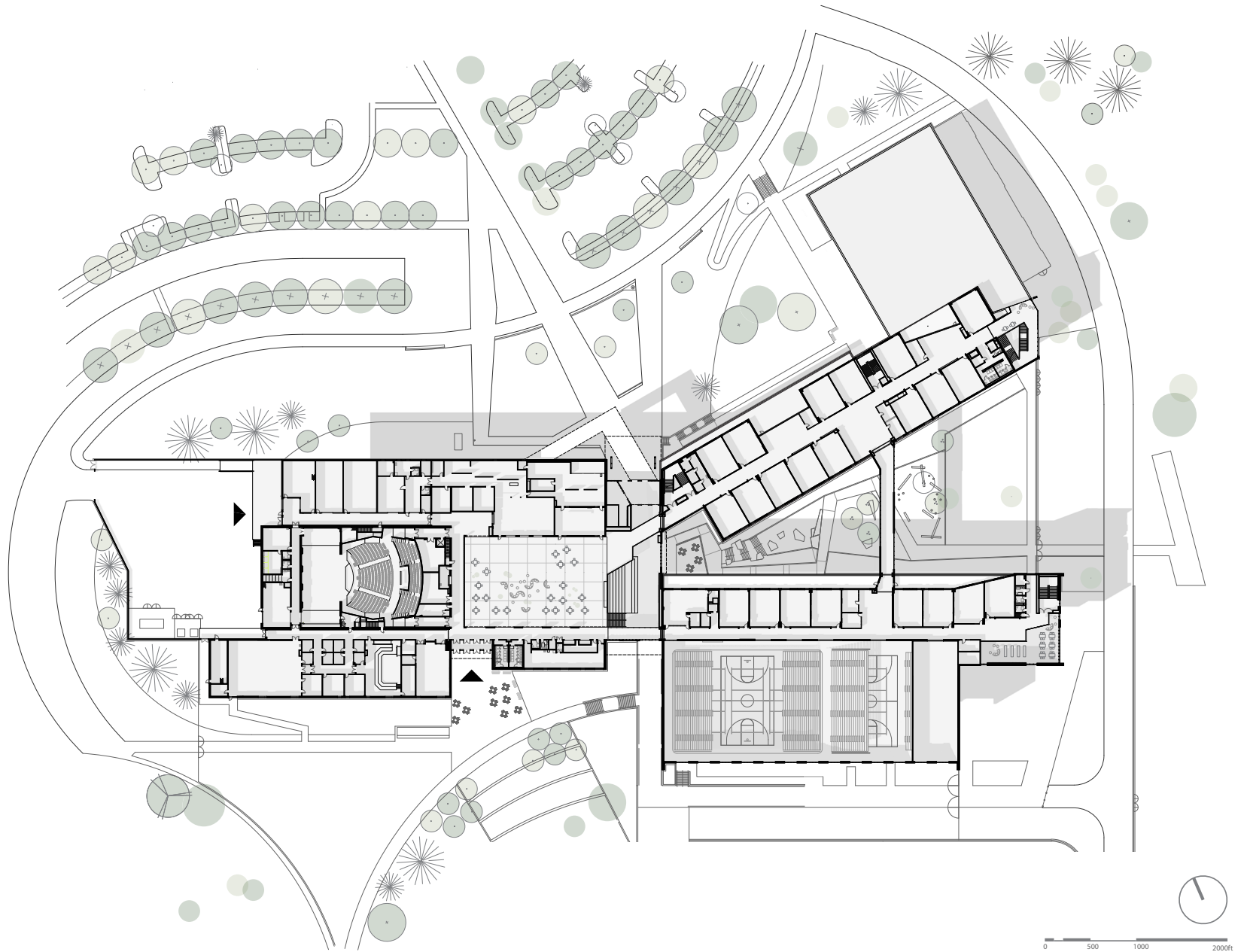


Level 1 Plan

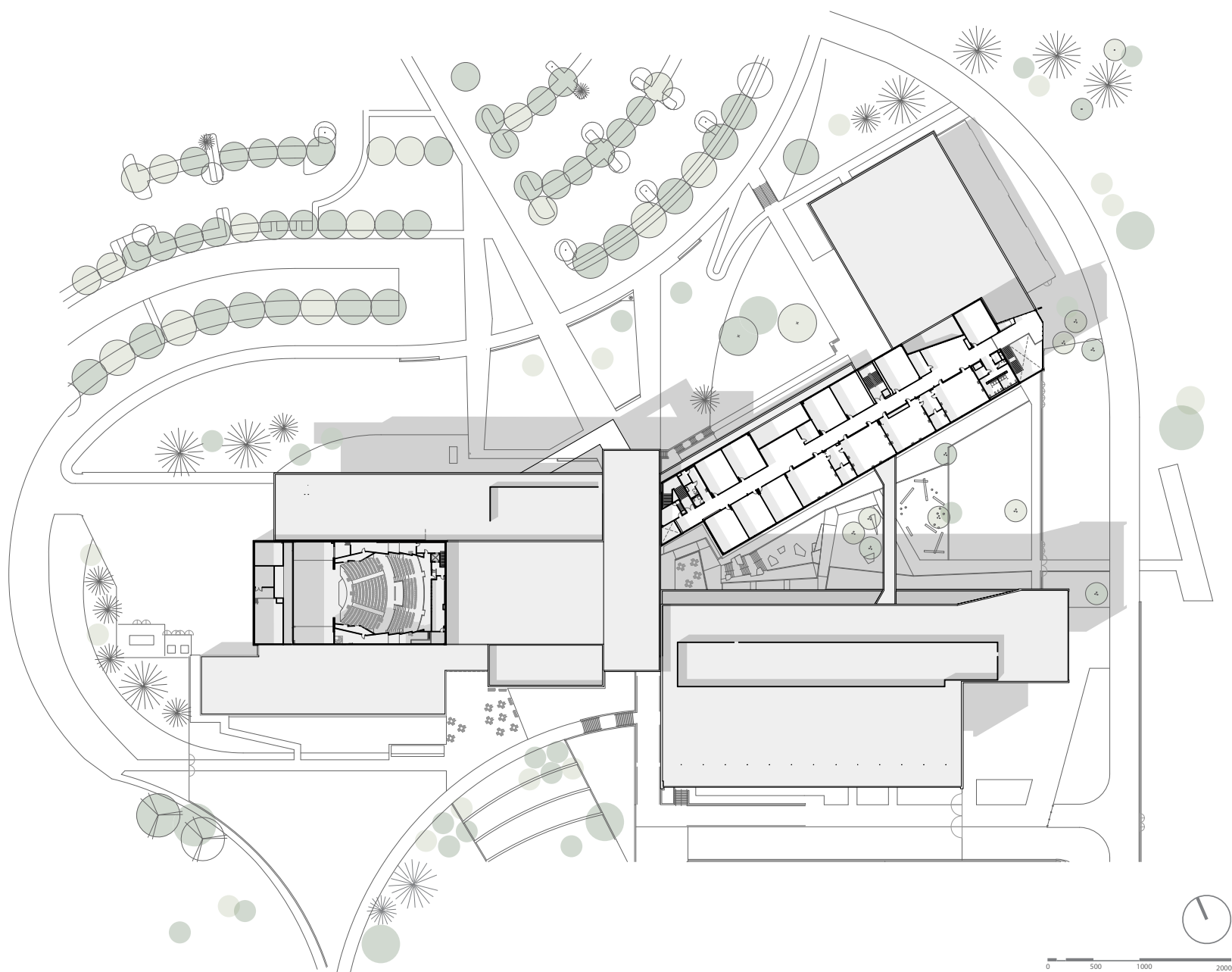


Level 2 Plan





Level 3 Plan



Level 4 Plan



Main Entry Rendering

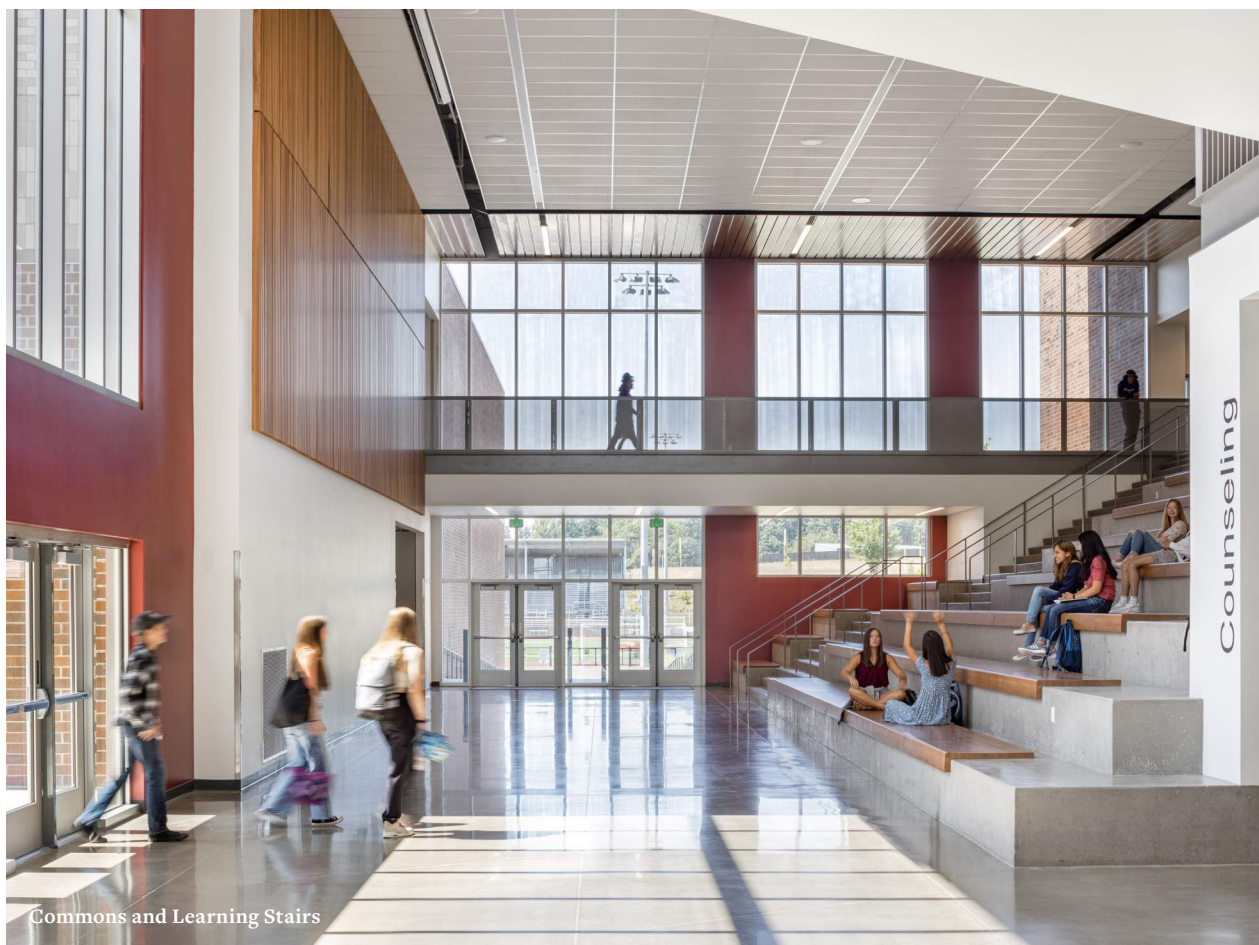
Results of the Process & Project

Along with school and District-level administrators, the High School Design Committee included students, educators, parents, community members, and School Board Members.

TRANSPARENT PROCESSES - AND SOLUTIONS

Along with school and District-level administrators, the High School Design Committee included students, educators, parents, community members, and School Board Members. The committee toured relevant precedent projects, developed a common understanding of challenges and objectives, co-created designs, and refined each proposed solution based on stakeholder feedback. Additionally, the design team engaged the Superintendent's Student Advisory Team to understand students' needs, concerns, and hopes for their new high school. Current high schoolers conveyed their desire for spaces designated for social connection, safe access to outdoor spaces, abundant daylight, independent study areas, and accessible opportunities to connect with trusted adults.

The design team prioritized solutions characterized by transparency to leverage visibility as a tool to spark student engagement, promote exploration, foster passions, and advance students along their individual pathways.



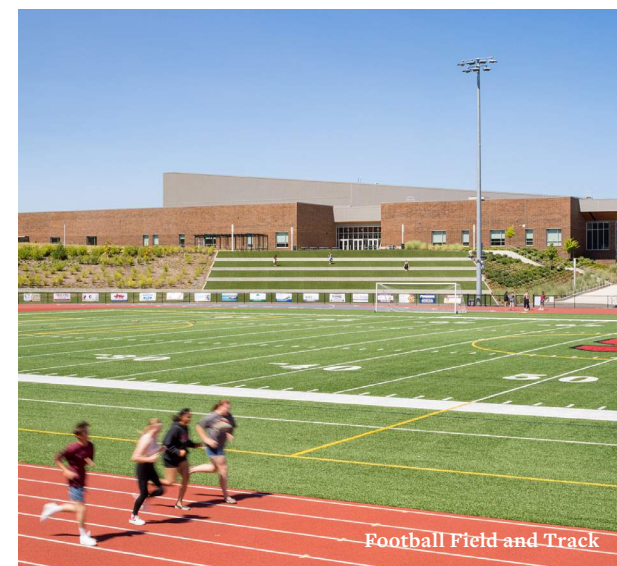
Commons and Learning Stairs



Highly Visible Athletic Spaces



Theater



Football Field and Track

Core curriculum spaces like general classrooms were placed near technical education, fine arts, and other elective programs to achieve District goals related to establishing program integration, increasing exposure, and putting activities – and the products of those endeavors – on display. Performing arts spaces are adjacent to learning stairs and other gathering areas, creating opportunities for these neighboring spaces to double as performance venues.

Physical education and athletic areas are visible from academic spaces, effectively reinforcing the importance of teamwork and holistic wellness. Similarly, interior and exterior program areas as well as athletic fields are accessible for community use after hours to bolster the Sherwood community's belief that the high school plays an integral role in promoting active lifestyles, overall wellness, and a sense of belonging.

Sustainability & Wellness

Interior and exterior materials – in addition to landscape design solutions – were selected to be durable, long-lasting, low-maintenance, and environmentally responsible.

REGION-SPECIFIC LANDSCAPE SOLUTIONS

The overarching landscape concept highlights the Oregon landscape which included Native Oak savannah, Douglas Fir/conifer forest, and agricultural fields to promote engagement with diverse habitats and plant species. Approximately 40 acres (57%) of the developed site is planted with Native and/or native adaptive, drought tolerant trees, shrubs, and groundcover; 50% of this area does not require irrigation. Combined, these features reduce maintenance and decreases annual water use by approximately 8 million gallons when compared to a conventional landscape approach.

ENERGY EFFICIENT LIGHTING

Inside, Sherwood High School utilizes energy efficient LED Light Fixtures for all interior lighting. The resulting watts per square foot is 0.46, which is well below the Oregon Energy Code requirement of 0.81 for an educational facility. Additional features such as wireless



Main Entry

lighting control systems and daylight sensors measure the amount of natural light within the space and automatically dim the light fixtures while maintaining minimum light levels. All light fixtures within the school are set at 90% of their max light output. As a result, the facility saves 10% in energy consumption without compromising light levels in the interior spaces.

MATERIAL SELECTIONS

Natural wood is used to mark important programmatic and social spaces to develop intuitive wayfinding and – through the use of this natural, renewable material – highlight connections to the natural world.



Student Courtyard



Abundant Natural Light in the Library (left) and Cascade Point (right)