

Enumclaw High School

Enumclaw School District
Enumclaw, WA





Executive Summary

How can we maximize transformational impact of a limited budget?

Enumclaw High School was established in the 1950s and is central to this rural King County community, including Enumclaw and Black Diamond. The existing campus consisted of many buildings constructed over multiple decades. The goal was to develop a comprehensive and inspiring master plan creating a coherent campus ripe with educational opportunities.

Amounting to half the building area, the addition on the south half of campus replaced multiple outdoor access classroom buildings. In turn, the remaining half received major upgrades and improvements to match the new construction. The end result is a completely transformed place of learning.

The project consolidates and expands the core academic spaces of the school into two wings connected by a third volume containing the career center, expansion of the cafeteria, and the library/media center. Each classroom wing focuses on the two-story skylighted learning commons between them, equipped with a variety of seating, adjacent small group rooms, and kitchenette. The central courtyard, created by the academic wings, extends

the commons space while capturing a spectacular view of Mount Rainier—a window to the school's unique identity.

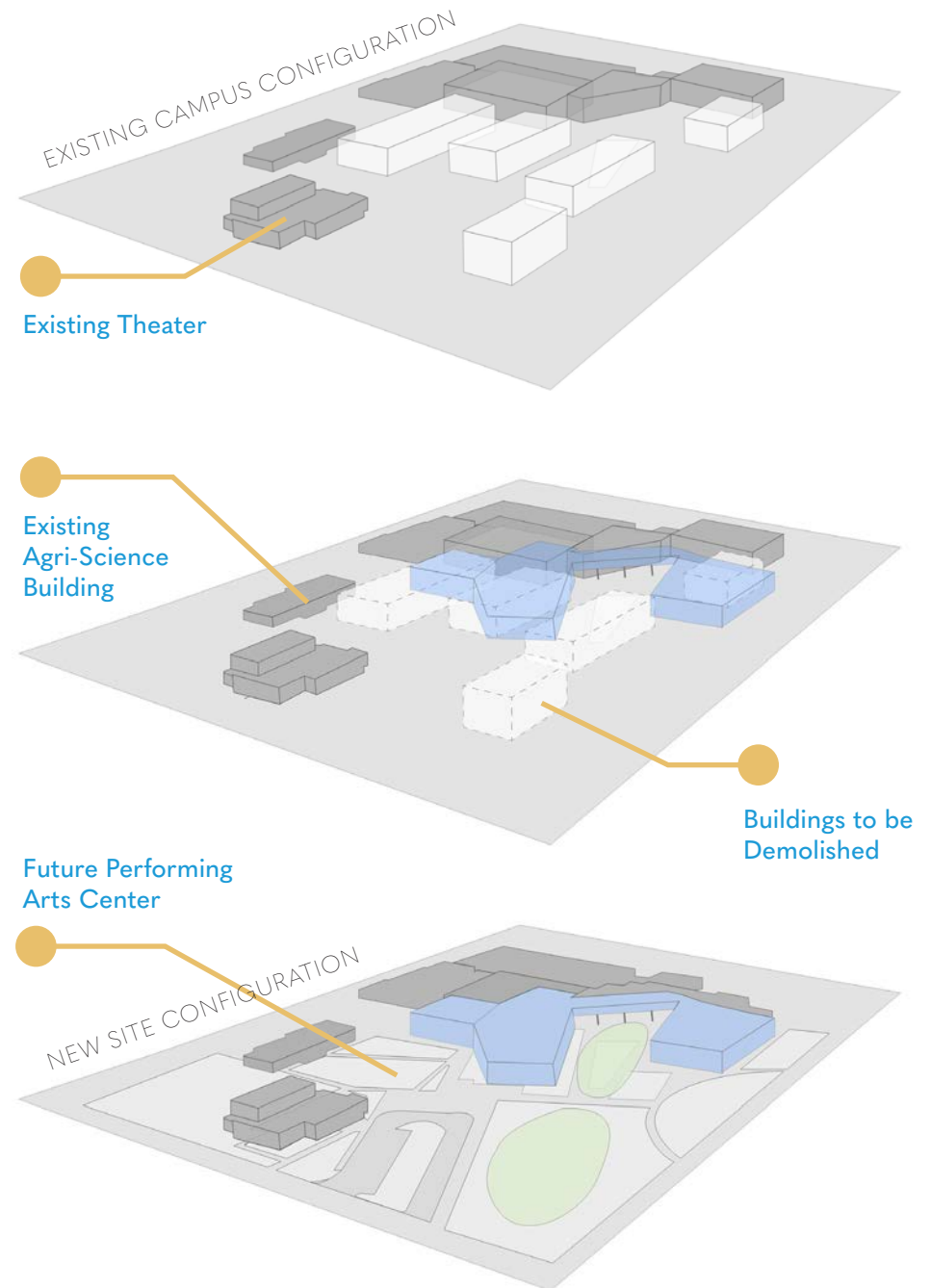
Enumclaw High School's bright, airy spaces affirm a learning environment designed to support the whole student, academically, socially, and emotionally. Soft seating, laptop bar counters, large marker board surfaces, and interactive projectors facilitate student conversation and collaborative group work throughout the learning commons. The life skills suite for students with developmental disabilities is centrally located while providing privacy. The new music suite offers small ensemble and practice rooms in addition to the classrooms. Large lab spaces are designed for sharing between the lecture classrooms.

Strategic interventions in the existing building complete the program enhancements and make for a comprehensive improvement to the campus. The existing physical education and athletic areas, agriculture-science building, culinary arts, and digital media areas were completely renovated. A future performing arts center is planned to complete the campus modernization and connect the agriculture-science building to the rest of the school.

Aimed towards Mount Rainier, this spectacular setting underscores the significance of the new, transformed campus.

Scope of Work & Budget

SIZE:	120,000 SF New Core Academies, Library, Commons Extension, Music, Athletics
	63,000 SF Modernized Athletics, Culinary Arts, Agriscience, Photo/Video
	60,000 SF Not Modernized Administration, Commons, Theater, Art, Shops
CAPACITY:	1,600 Students
CONSTRUCTION BID:	\$45,000,000
PHASE 1 COMPLETE:	Fall 2018
PHASE 2 COMPLETE:	Fall 2019
FUTURE PHASE:	Includes master plan and design for a future performing arts center that would provide interior connections from the main building to the AgriScience Building.



Scope of Work

UNINSPIRED EXISTING CONTEXT

Multiple Buildings

outdoor walkways, no spatial quality, haphazard feeling



Existing Hallway

lack of character, un-inspiring



Existing Courtyard

well used and appreciated as a central gathering area but lacking in experiential quality



The south side of the existing school contained the majority of the core academic spaces. They were comprised of a collection of simple and minimally functional separate buildings. Outdoor spaces were appreciated but highly underutilized and ad-hoc

A key goal was to remake the south half of the school into a real campus with a connected building and indoor and outdoor spaces **creating an authentic sense of place.**

School & Community Engagement

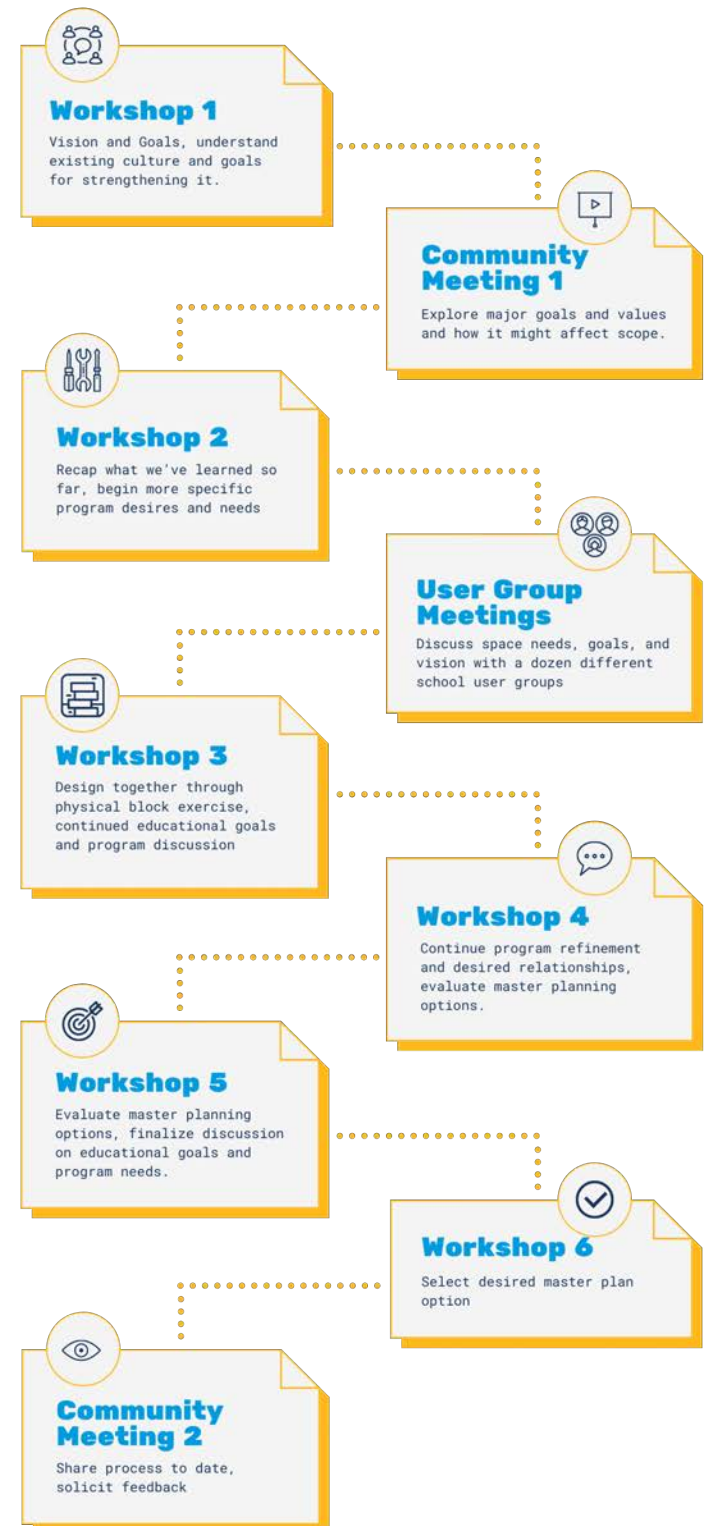
EDUCATIONAL PLANNING

We start every meeting summarizing and synthesizing what we heard at each previous discussion. This keeps us as a planning team on the same page and allows us to always keep the Big Picture in mind.



Enhancing the student experience to improve engagement was foundational to all the educational planning. Many collaborative sessions over multiple months with the large school and community-based design committee, school departments, and District staff provided substantial fodder to guide the design. Here's the key goals arising from these discussions:

- **Increase student engagement** through educational program enhancements and the physical environment .
- Create a “Third Place”, **centrally located social space** that connects the school – indoors and outdoors.
- **Foster spontaneous collaboration** between student and student and student and teacher.



School & Community Engagement

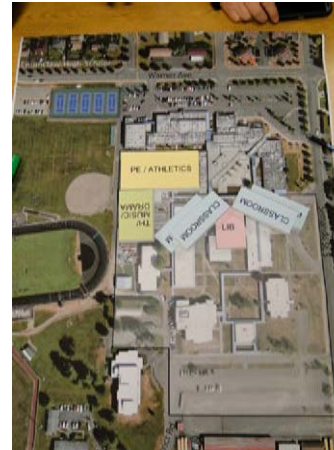
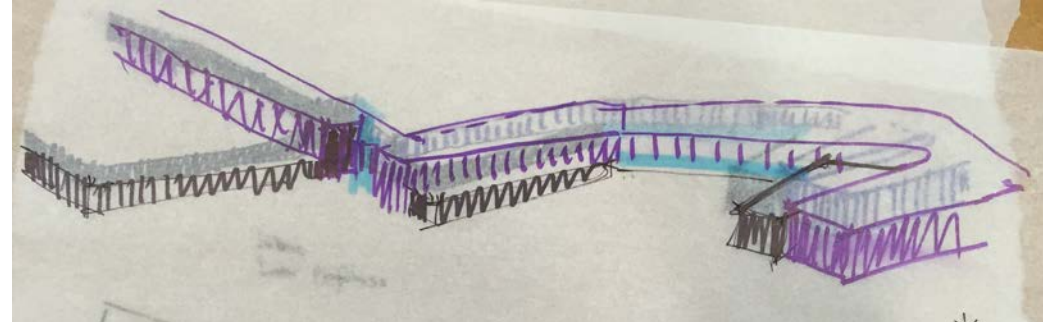
PHYSICAL PLANNING

Physical and Educational Planning go hand-in-hand. As an existing school consisting of many buildings constructed over multiple decades, the campus had an ad-hoc feel without cohesiveness. Originally imagined as a way to improve, enhance, and reinvigorate the educational opportunities, it was clear that trying to make the entire facility more inspiring and cohesive was crucial.

With a fantastic view of Mount Rainier that was not acknowledged in the existing campus layout, the new addition was able to reframe that view and make it a central feature of each classroom wing, the library/commons expansion area, and the central courtyard.

strategic modernization was used to enhance programs, such as culinary arts, video production, agriculture-science, and athletics. Physical Planning Goals and Decisions:

- **Transform the building** through a major intervention on the south half of campus and strategic renovation additions throughout the remainder.
- We like having a courtyard as the heart of campus - **we just need a much better one**
- **Maximize renovation dollars** through specific program enhancements
- Create a **distinctive new addition** that can relate to the existing school building.



Educational Environment

TRANSFORMATION

BEFORE



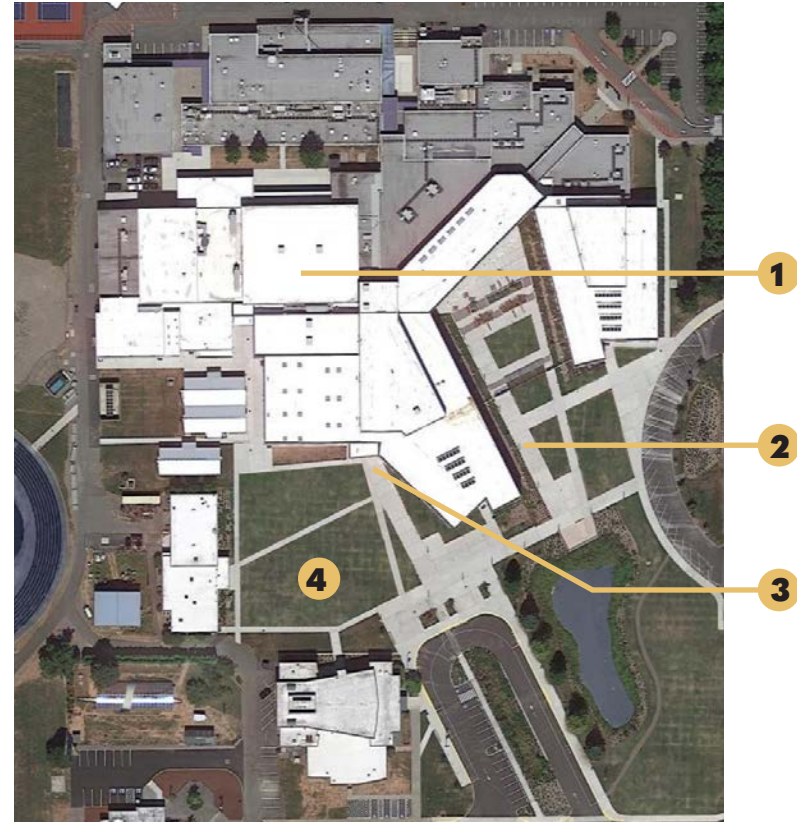
Multiple Disconnected Buildings

No Sense of Place

No Clear Entry and Poor Security
with Excess Exterior Doors

No Master Planning for Future Additions

AFTER



1

Clear Circulation Through Unified Campus

2

Created a Sense of Place Through Outdoor Space and Views of Mt. Rainier

3

New Community and Student Entry Connects with Interior Public Space

4

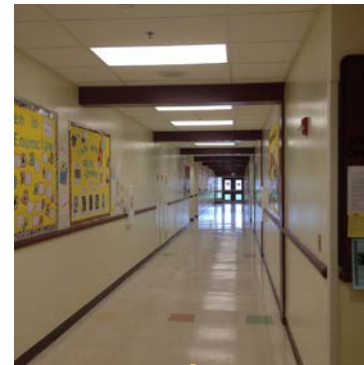
Location of Future Performing Arts Center

Educational Environment

TRANSFORMATION

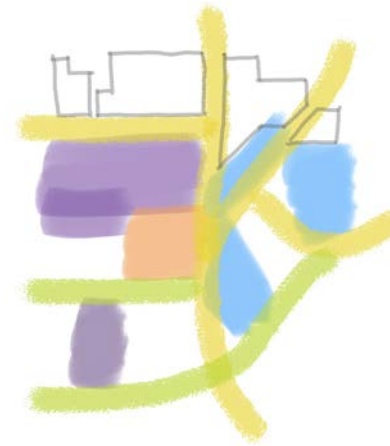
Transformation is achieved with simple but thoughtful means:

- Crafting outdoor spaces to be **purposeful, useful, and literally shaped by views** of Mt. Rainier
- Through **clear and daylight** circulation
- By **rethinking academic spaces**.



Educational Environment

FIRST FLOOR PLAN



The design creates new, coherent and clear circulation pathways to connect the existing main entry and the new student/community entry and link together the new academic spaces. The shape of the new construction is focused on the vista of Mount Rainier. Outdoor spaces are more deliberate and designed for student use and clear circulation.

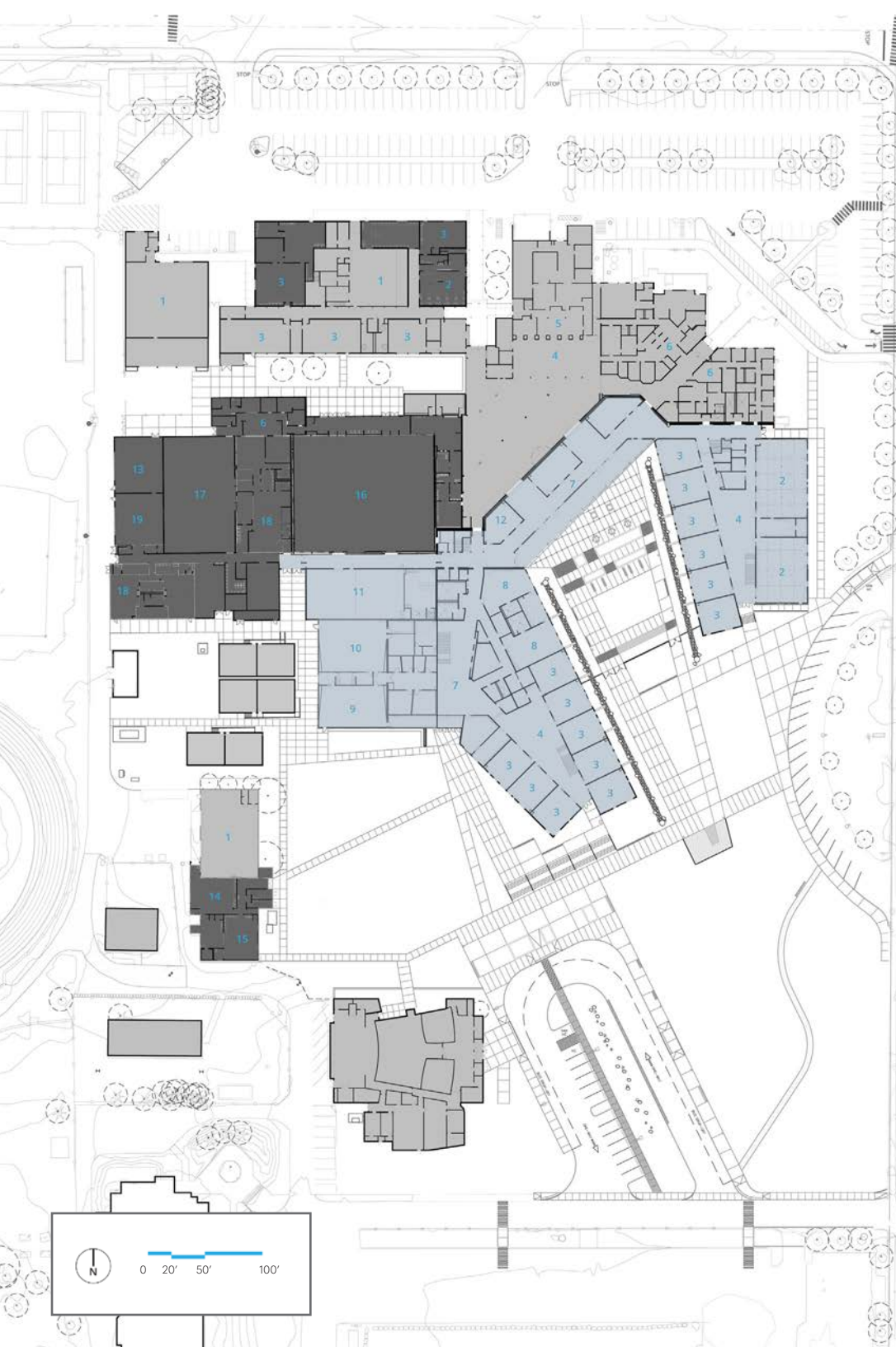
Strategic interventions in the existing building complete the program enhancements and make for a comprehensive improvement to the campus.

Level 1 - Floor Plan

LEGEND

- | | | |
|--------------------|--------------------|-----------------|
| 1. Shop | 8. Life Skill | 15. Agriculture |
| 2. Lab | 9. Choir | 16. Gymnasium |
| 3. Classroom | 10. Band | 17. Court |
| 4. Commons | 11. Wrestling Room | 18. Lockers |
| 5. Kitchen Service | 12. Resource | 19. Aerobics |
| 6. Admin | 13. Weight Room | |
| 7. Hallway | 14. Med/Health | |

- | | |
|--|------------------|
| | NO WORK DONE |
| | MODERNIZATION |
| | NEW CONSTRUCTION |





The Third Place provides students a chance to interact educationally and socially at a smaller scale than the Commons, increasing opportunities to find spaces that feel comfortable. With direct access to key amenities including the Commons, Career Center, Leadership Classroom, and central courtyard's covered porch, it is a genuine hub for the campus.

Educational Environment

THE "THIRD PLACE"



- EXISTING COMMONS
- IMPROVED PRIMARY CIRCULATION
- COURTYARD

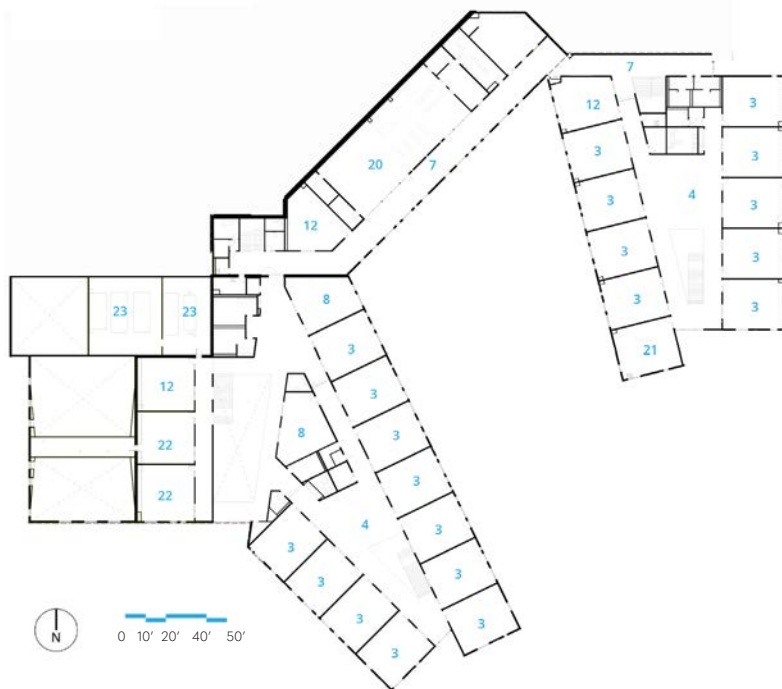
- EXPANDED COMMONS
- CAREER CENTER
- LEADERSHIP CLASSROOM



Extension of the Library / Simple Connector Between Buildings



Library / Media Center as Bridge



Educational Environment

THE "THIRD PLACE"

Previously, the library was a detached building and only engaged with by students if they made a special trip to that building. The new design centralizes the library as a bridge connector between the new classroom wings. The hallway was widened so it can serve as an extension of the library, both during the school day and as a lobby space for community events. With skylights, glazed wall between library and hall, and large windows to the courtyard and Mount Rainier, this place can act as a social and educational center – another "Third Place" within the school.

Level 2 - Floor Plan

LEGEND

- | | | |
|---------------|--------------------|---------------------|
| 1. Shop | 10. Band | 20. Library |
| 2. Lab | 11. Wrestling Room | 21. Science Lecture |
| 3. Classroom | 12. Resource | 22. PE (Health) |
| 4. Commons | 13. Weight Room | 23. Mechanical |
| 5. Kitchen | 14. Med/Health | |
| 6. Admin | 15. Agriculture | |
| 7. Hallway | 16. Gymnasium | |
| 8. Life Skill | 17. Court | |
| 9. Choir | 18. Lockers | |
| | 19. Aerobics | |



Educational Environment

THE "THIRD PLACE"

“

To me, high school was a chance to become a better human, to expand expectations of myself and the people around me, to develop my identity, who I am, and who I strive to be.

Valedictorian, Enumclaw High School Class of 2019

”



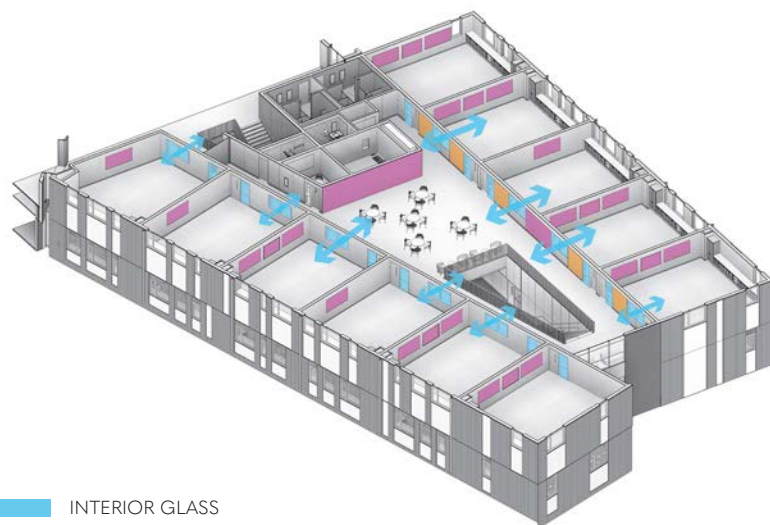
“

The creation of common learning spaces has revolutionized the way in which students and staff are able to collaborate to improve the teaching and learning experience. Students have a place to gather, discuss issues, present information, and problem solve. Staff have a place to gather for professional learning community work. After school activities and clubs also use these spaces.

Principal, Enumclaw High School

”





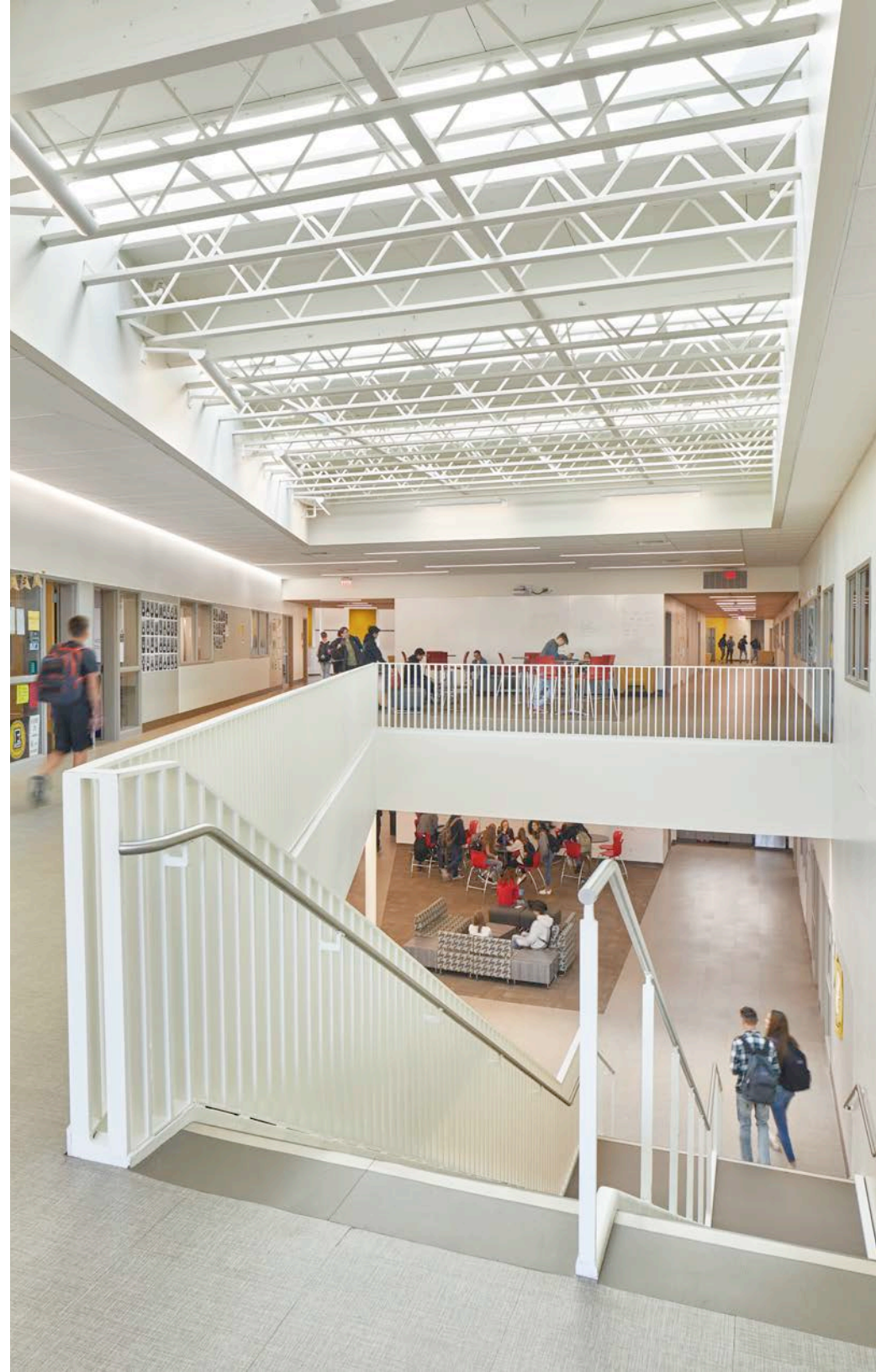
- INTERIOR GLASS
- WHITE BOARD
- TACK BOARD

“

In conjunction with the new building, we initiated program improvements in our math and science curriculum based on using vertical surfaces for problem solving. Large white board areas in hallways, common spaces, and classrooms makes this learning experience possible.

Principal, Enumclaw High School

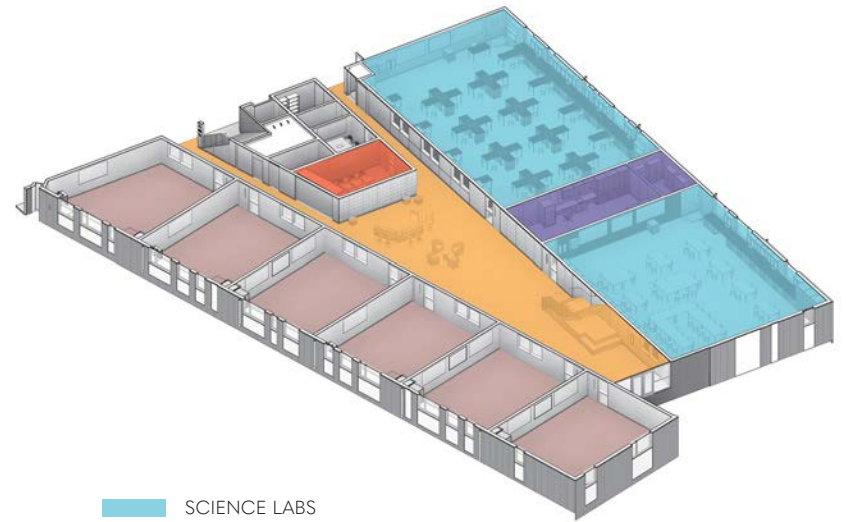
”





Educational Environment

SCIENCE CELEBRATED



- SCIENCE LABS
- FLEXIBLE LEARNING COMMONS
- MEETING ROOM
- SCIENCE CLASSROOMS

Two large shared labs are located across a flexible open learning commons space from each science classroom. One is designed for chemistry and upper level biology, while the second accommodates physics, lower level biology, and robotics, thanks to this open arrangement. Each has the capacity for two classrooms, or half the science students, which prevents duplicating services in separate classrooms.



Physical Environment

SENSE OF COMMUNITY, SENSE OF ENTRY

Community access to the old school public areas, such as the Commons and Gymnasium, was limited either to an entry from the north or weaving through the multiple buildings on the south. Student entry from buses had similar limitations. A new a main entry and gracious lobby for students and the larger community now connects clearly to the commons and gym. Additionally, a new public lobby for the gym off the existing commons furthers community access and participation in school life.

Results of Process and Project

“

Four words exemplify our goals for Enumclaw High School:

*Irresistible,
Deep,
Engaging,
and Authentic.*

Assistant Principal,
EHS

”

IRRESISTIBLE



DEEP



ENGAGING



AUTHENTIC



Results of Process and Project

A PLACE YOU WANT TO BE

"We like having a courtyard as the heart of campus - we just need a much better one."

-Design Committee



Enumclaw High School's bright, airy spaces affirm a learning environment designed to support the whole student, academically, socially, and emotionally. Large skylights over the open stairs and double height space at the center of each classroom wing bring natural light deep into the building. On site, the stormwater detention pond is landscaped as a wetland with a pier at one end to invite outdoor learning. Aimed towards Mount Rainier, this spectacular setting underscores the significance of the new, transformed campus.



