



LESOLUTIONS AWARDS SUBMISSION
JULY 16, 2018 | PROJECT DOSSIER
SOUTHWEST HIGH SCHOOL, MINNEAPOLIS MN

EXECUTIVE SUMMARY

Major drivers of this project were to address increasing student enrollment, add instructional space and core facilities, and enhance building safety and security. All this was to be accomplished with minimal impact to a tight urban site in an established neighborhood setting. The central addition was complicated by the fact that it was built on a vacated street with major utilities that had to be protected or rerouted. Full occupancy of the building during construction required carefully planned phasing and sequencing of work to minimize disruptions of the student's educational experience.

SCOPE OF WORK & BUDGET

The existing campus was made up of two buildings connected by a small pedestrian link which created congestion and circulation problems.

The primary goals were to address increasing enrollment, add instructional space and core facilities, enhance building safety and security, and provide all with minimal impact to a tight urban site in an established neighborhood setting. The existing campus was made up of two buildings connected by a small pedestrian link which created congestion and circulation problems.

The project cost was \$15,630,000 and included a central addition to bridge the east and west building together. This also created a commons area. Alterations were also completed to the media center and flexible learning areas beyond the classrooms.

SCHOOL/COMMUNITY ENGAGEMENT

The community of Southwest High School is a diverse student population of over 1,500 students and is a part of the Minneapolis Public School District.

Full occupancy and expanding student population during construction requiring phasing and sequencing of work to avoid or at least minimize disruption- no student should have their educational experience negatively impacted by the project. The central addition was complicated by the fact that it was built on a vacated street with major utilities that had to be protected in place or rerouted.

EDUCATIONAL ENVIRONMENT

The pedagogical spirit of Southwest HS, an International Baccalaureate World School within the diverse Southwest community, extends throughout the building. The design needed to incorporate flexibility and creativity to engage students in a variety of group sizes, social patterns and learning modalities. The use of the school color and nautical imagery helps to reinforce the school's identity. Special care was taken to keep the integrity of the existing building by celebrating the exposed façade and keeping as much existing woodwork as possible.

In each space, various types of furniture were used to allow students and staff the ability to create a setting conducive to each individual teaching and learning style. Whether working alone or in a group setting, students and staff are able to create an environment where each member is supported. Staff planning was intentionally located near the instructional hub area to give students the ability to work alone but also easy access to staff should they need assistance.

The design incorporates varied learning settings beyond the classroom. 'Garage' spaces expand exploratory options and give students a place where they have permission to experiment and 'get messy'. 'Instructional hubs' are accessible and visible from classrooms providing a flexible space to engage different group sizes, social patterns and learning modalities.

PHYSICAL ENVIRONMENT

The central addition bridged the east and west and became the heart of the school. It greatly improved the flow and connections while providing a secure entry, and a central commons that supports dining, social engagement, informal learning, and helps create a sense of community. It improved functional relationships by moving the media center, career center, and food service to more centralized locations. The design incorporates varied learning settings beyond the classroom. 'Garage' spaces expand exploratory options and give students a place where they have permission to experiment and 'get messy'. 'Instructional hubs' are accessible and visible from classrooms providing a flexible space to engage different group sizes, social patterns and learning modalities.

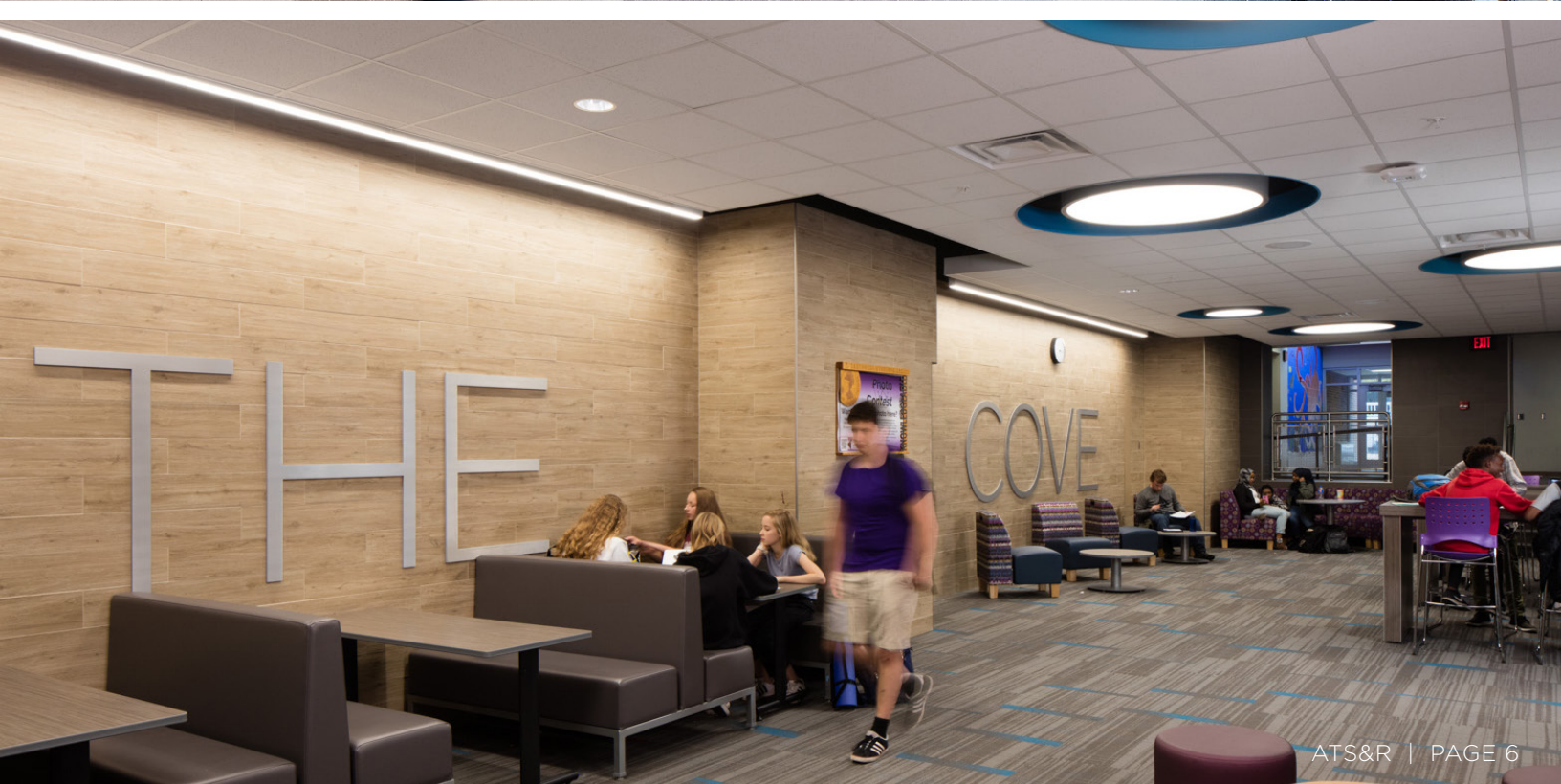
Special attention was made to preserve brick, wood-work and celebrate the history of the existing building. The use of school colors and nautical imagery helps to reinforce the school's identity. The spirit of Southwest HS extends throughout the building.

RESULTS OF PROCESS & PROJECT

The central addition became the bridge between the east and west and the heart of the school. It greatly improved the flow and connections between the existing parts, while providing a secure entry, and a central commons where students eat lunch, study, and perform. It improved functional relationships by moving the media center, career center, food service to more centralized locations. The vacated spaces allowed the introduction of instructional 'hubs' to support classes and the connection between students and staff. 'Garage' spaces expand exploratory options and give students a place where they have permission to experiment and 'get messy'. The project addressed the needs of school regarding increasing enrollment and the need for more instructional spaces as well enhancing building safety and security.

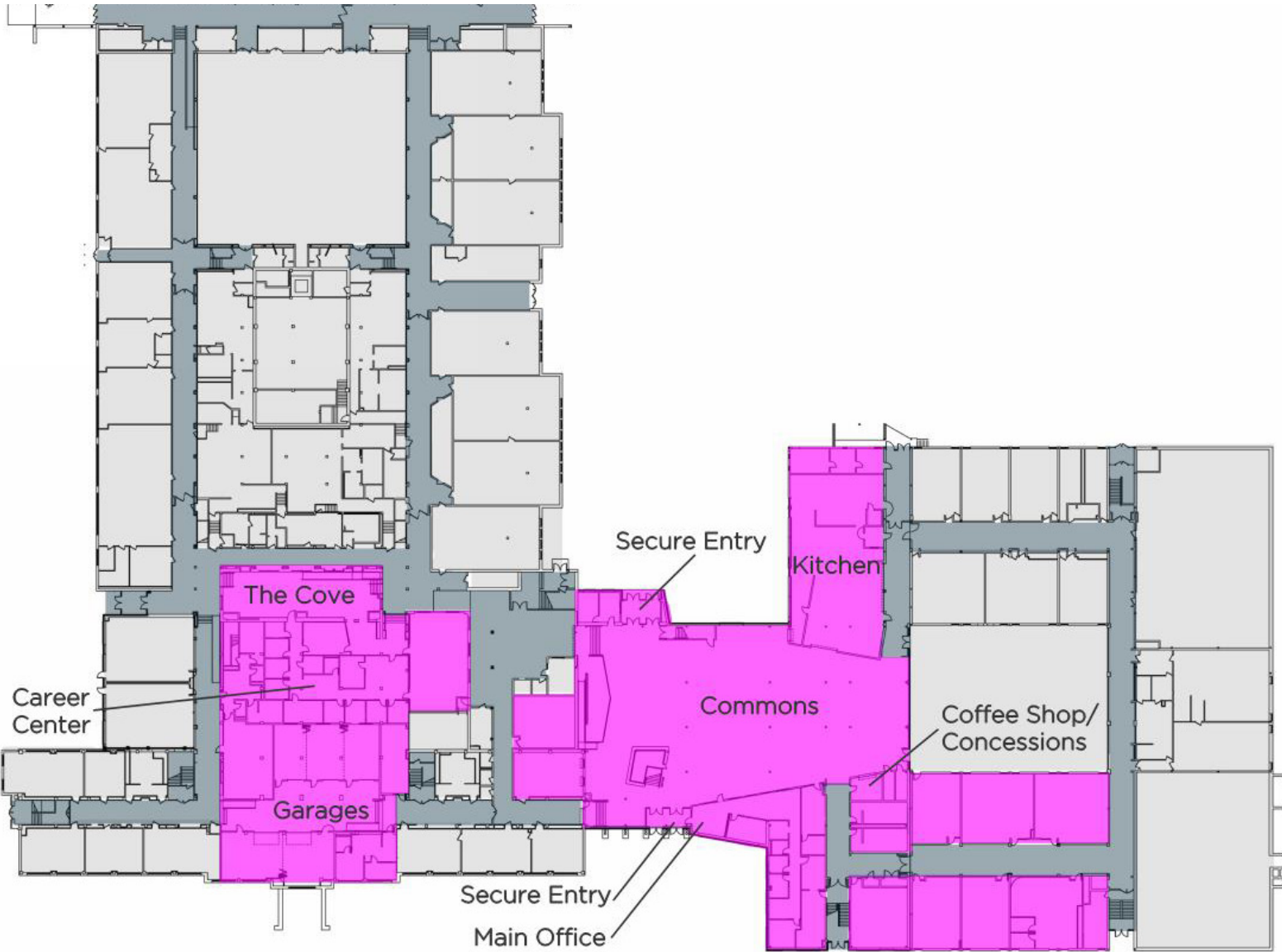




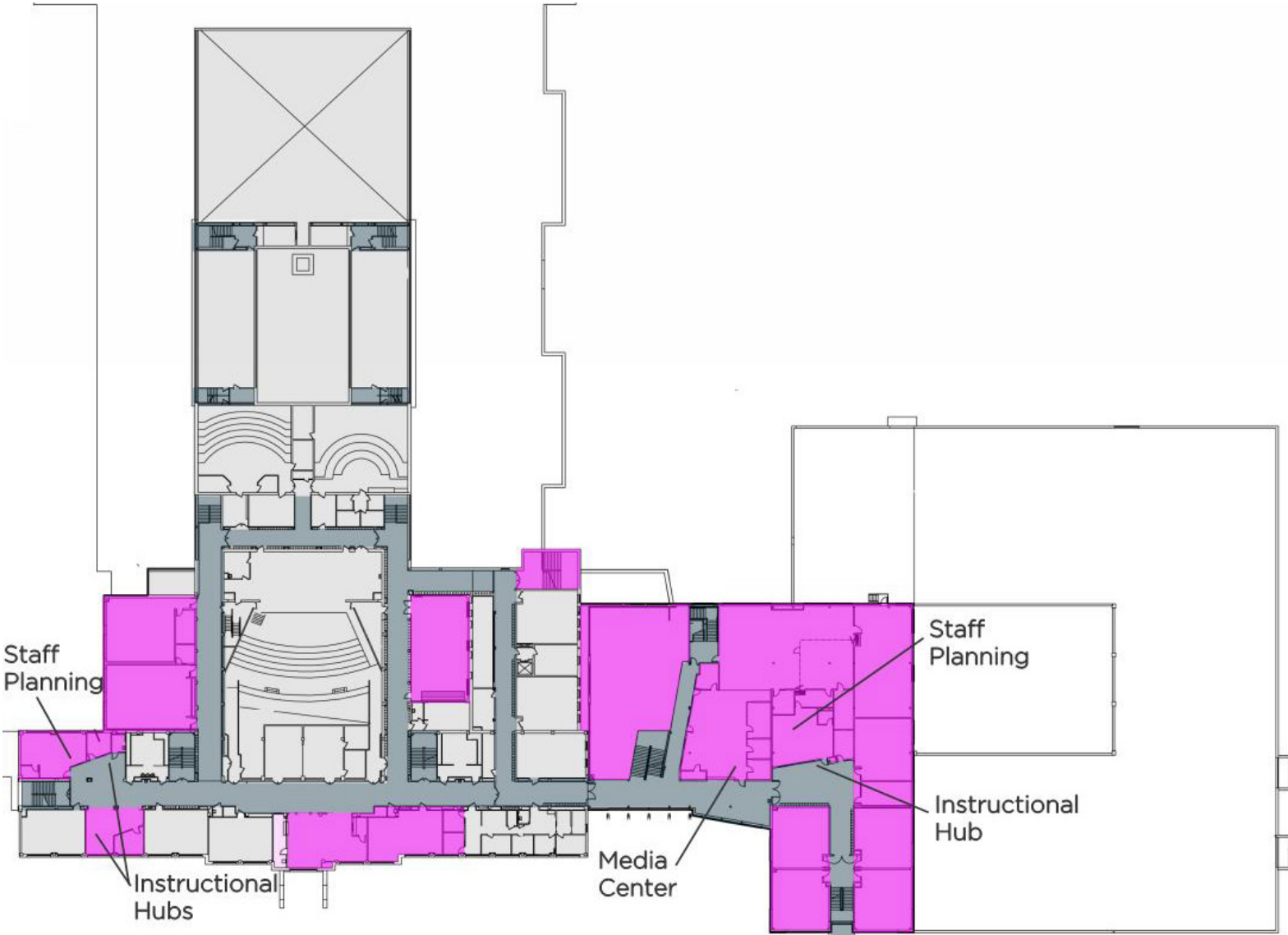




FIRST FLOOR SPACE PLAN - SOUTHWEST HIGH SCHOOL



SECOND FLOOR SPACE PLAN - SOUTHWEST HIGH SCHOOL



THIRD FLOOR SPACE PLAN - SOUTHWEST HIGH SCHOOL

