



Little Prairie Primary School

James D. MacConnell Award

East Troy, Wisconsin

TABLE OF CONTENTS

Tab 1
Executive Summary 1

Tab 2
Project Scope + Budget 2

Tab 3
Educational Brief + Visioning 3

Tab 4
School + Community Engagement 5

Tab 5
Educational Environment 8

Tab 6
Physical Environment 12

Tab 7
Results of the Process 19





TAB 1 | EXECUTIVE SUMMARY

EXECUTIVE SUMMARY

Project Overview

Project Name: Little Prairie Primary School

Location: East Troy, Wisconsin

Owner: East Troy Community School District

Project Cost: \$13,477,483

Project Size: 74,100 square feet

Project Start Date: April 2016 (construction start)

Project End Date: August 2017 (construction end)

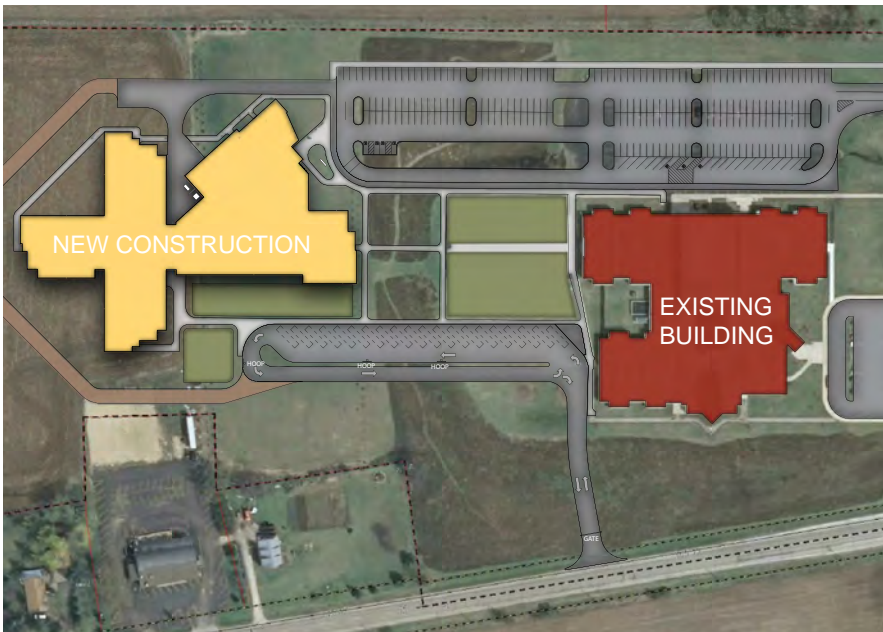
Photographer: Bill Fritsch, Harper Fritsch Studios, Inc.

Awards: The Daily Reporter (WI) - Top Project 2017 & Gold Design Award - ASID-WI



EAST TROY
COMMUNITY SCHOOL DISTRICT

Committed to the Growth & Success of Each Student, Each Year



**FIRST IN THE
NATION TO
INCLUDE STEM
LAB FOR PRE-K
STUDENTS**





TAB 2 | PROJECT SCOPE + BUDGET

PROJECT SCOPE + BUDGET

Overall Project Description and Scope

In April 2015, the East Troy Community School District passed two referendum questions, totaling \$24.7 million, to address district-wide needs. The largest component of the referendum was for this 74,100 square foot, new PreK-2nd grade school.

Little Prairie Primary School is a one-story, Pre-K -2nd grade facility that shares a site with an existing school, Prairie View Elementary.

The classrooms in the K-2nd grade wings are designed with flexibility in mind. Shared resource spaces are carved out of the corridors and allow for visibility and supervision from each of the classrooms. These learning environments were designed specifically to support the District's goals of competency-based learning. Glazed garage doors between classrooms enable co-teaching and an open collaboration environment allows teachers and students to work together.

The commons are located at the center of the school, serving as the heart of the building. This area is modeled after East Troy's town square and the architecture playfully mimics building facades and helps break down the scale of this generous space where natural light spills through clerestory windows. The commons are surrounded with the specialized spaces accessed by the whole school: a media center, gym, art, music, and a STEM lab.

Construction began in early April 2016 and was completed in August 2017. The estimated construction cost for this new elementary was \$14,500,000. The final/actual construction cost came in under budget at \$13,477,483. The design team worked alongside a dedicated team that included members of the District and community as well as a construction manager and consultant team in order to make the Little Prairie Primary School project a success.



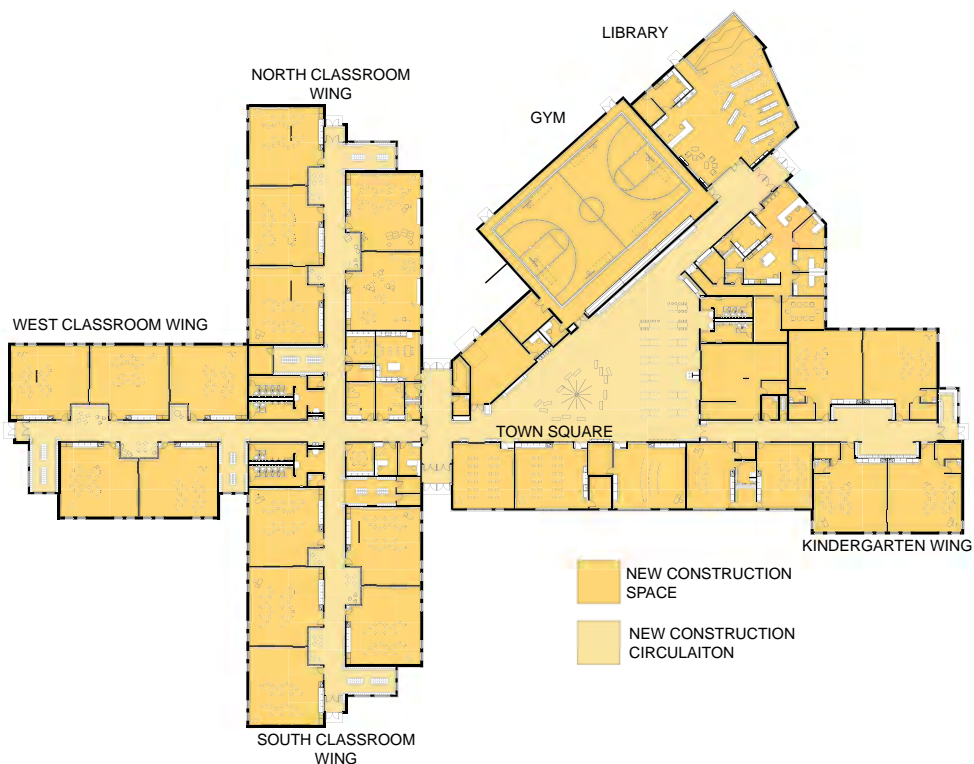
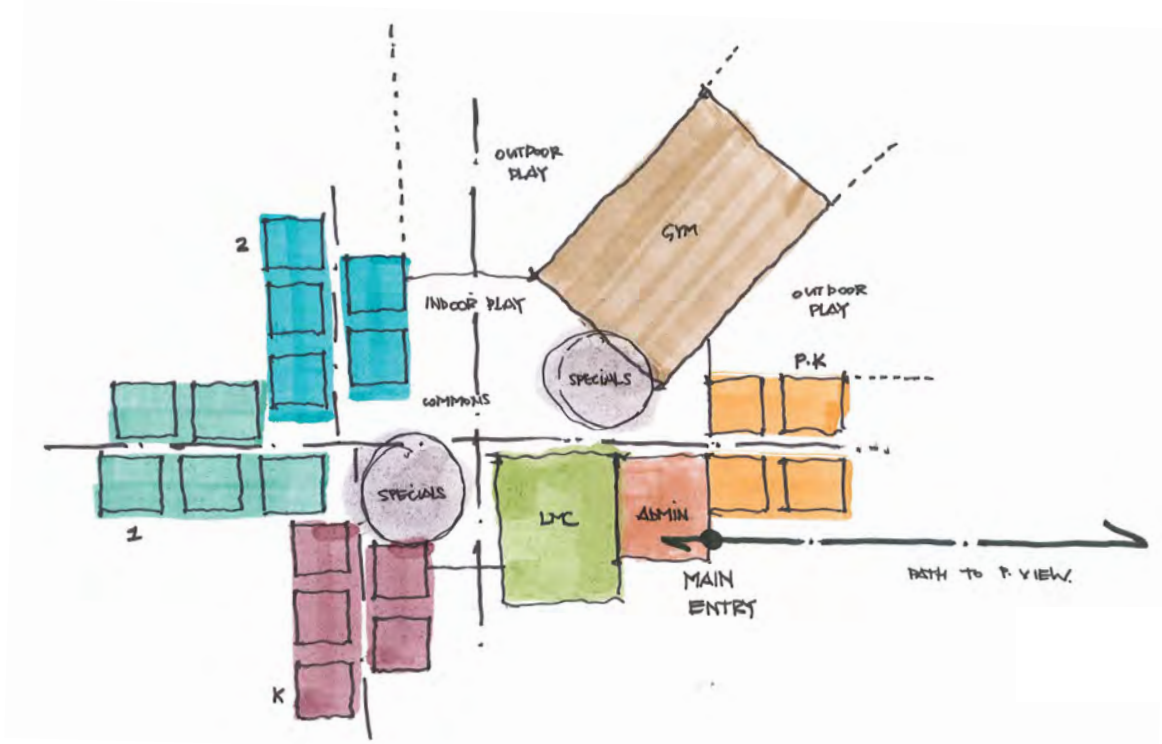


**TAB 3 | EDUCATIONAL BRIEF +
VISIONING**

EDUCATIONAL BRIEF + VISIONING

Value of Educational Visioning

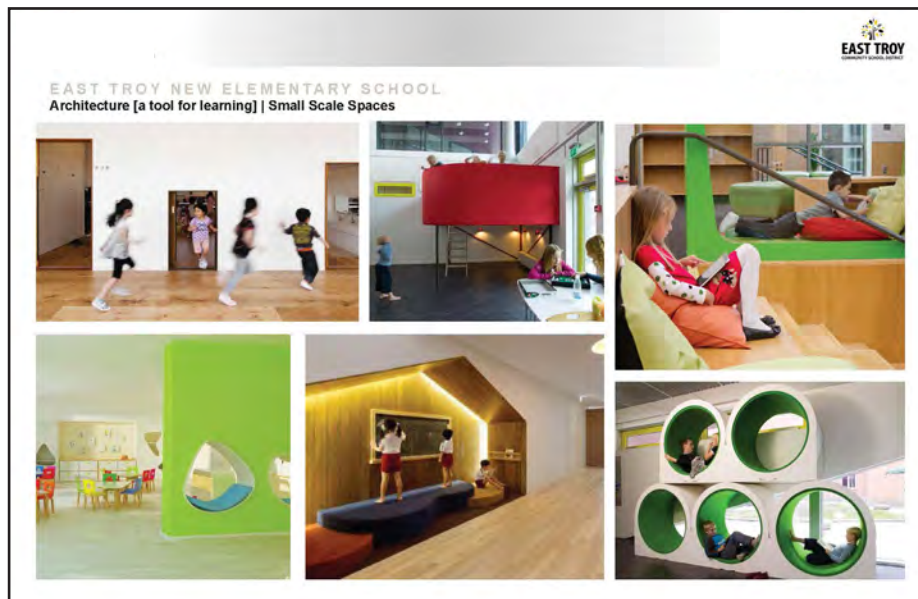
The design team worked alongside the District to explore a number of different design options for their new facility. By using these educational visioning methods, the design team was able to help the District explore many different and unique design elements that could be incorporated into the new building.



EDUCATIONAL BRIEF + VISIONING

Cultivating a Team Effort

These educational visioning methods were used throughout the entirety of the design process. From design development to schematic design to interior furnishing and finishes. Therefore, the end result is one that design team, District and community can truly be proud of.



Social and Emotional Needs of Students

While it was important to support the academic needs of the District it was also vitally important for them to support the social and emotional needs of both their students and faculty. These goals and needs were kept at the forefront during design and are illustrated in the space itself. With ample space for respite, relaxation and reflection, Little Prairie Primary is a place where students and teachers feel that their needs are always taken into consideration.

In the words of Principal Mrs. Lindsey Harris, “We are proud of the Little Prairie school environment. Our instructional practices, in combination with a focus on the social and emotional needs of young children, create an educational experience that best meets the needs of our littlest learners, and prepares them for future success.”



**TAB 4 | SCHOOL + COMMUNITY
ENGAGEMENT**

SCHOOL + COMMUNITY ENGAGEMENT

Project Challenges & Available Assets

The overall challenge experienced during the design process for Little Prairie Primary School was to make sure all voices and opinions of stakeholders and community were heard and supported over the duration of this project.

With the help of a strong leadership team at the District level, the design team was able to gather all thoughts and questions about the project and help the District present a unified vision of the space. The administrative and teaching staff was extremely supportive during all visioning sessions and gave valuable insight and thoughtful input.

To help bring the educational design goals of the district to life, the administrative team attended building tours alongside the design team and created an Elementary Advisory Team in order to help the visioning process and explore different spaces.

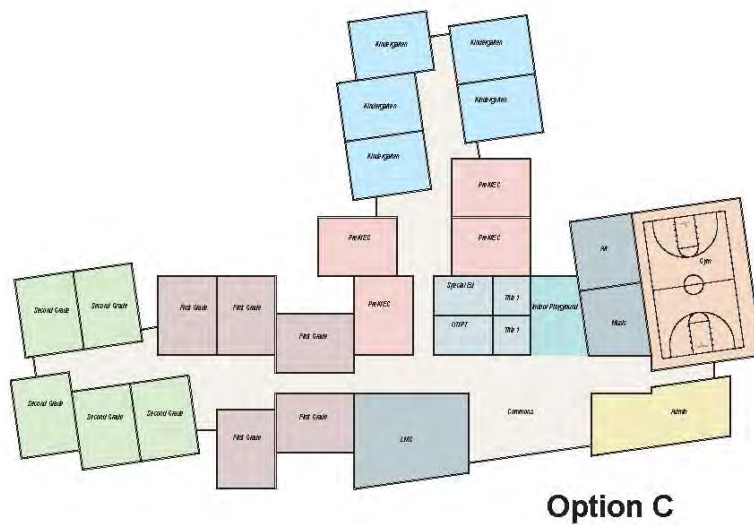
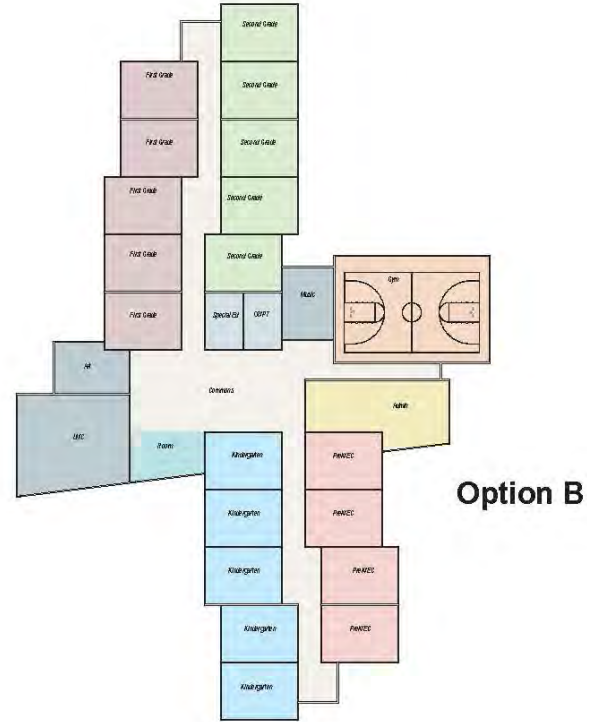
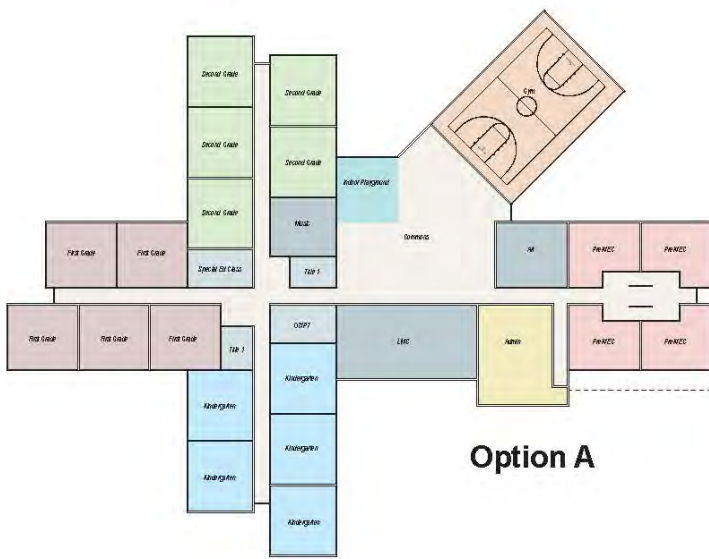


SCHOOL + COMMUNITY ENGAGEMENT

Value of Process and Project to the Community

The East Troy community saw immense value in building a new, innovative, safe, and welcoming school that would nurture and educate the youngest learners in the community to provide a solid educational foundation. In order to get to the final product, the team explored a number of options for the new facility, pictured below.

Building Option Diagrams





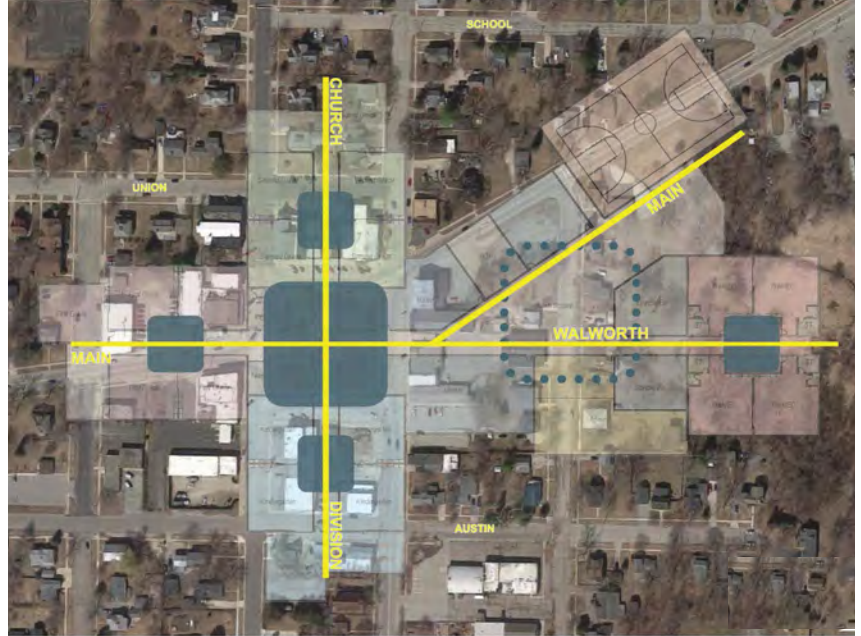
TAB 5 | EDUCATIONAL ENVIRONMENT

EDUCATIONAL ENVIRONMENT

Educational Vision and Goals

Overall, Little Prairie Primary School helps to further the District's mission of ensuring and providing 21st Century education to all of their students. Student learning was a primary consideration when mapping the educational and design goals of this project, which in-turn provides a venue in which students and faculty will thrive for generations to come. The educational vision and goals of this project were accomplished by integrating the following items into the design:

- Open, collaborative environments with shared spaces for co-teaching
- Connecting the school's neighborhoods through the 'Town Square'
- Integrating a theme throughout the school
 - » The nature theme of the school was accomplished by assigning each wing a color/natural element: green/grass, yellow/sun, teal/water, blue/sky
- Building a sense of community throughout the neighborhoods
- Creating the first SmartLab for Pre-K students in the Nation



EDUCATIONAL ENVIRONMENT

Curriculum Supported Environment

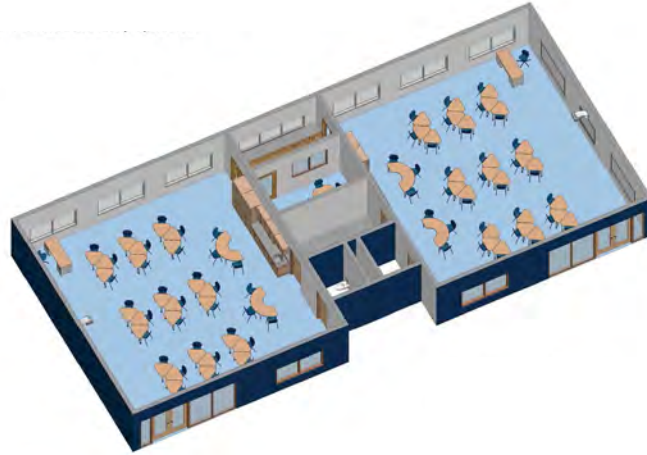
When planning the design of this new building, the team was charged with providing collaborative space both inside and outside of the classroom that supported the curriculum goals of the district.

The design team created glazed alcoves, adjacent to the corridors, which provide passive supervision of students from both the classroom and the corridor. Soffits, flexible furniture, and material color cues further define the collaboration zones and help set expectations of behavior and activity type without the need for a barrier. These spaces also aid in allowing natural light to spill from the classroom into the corridor.

The school also includes various 'hubs of learning' that can be adapted for groups of all sizes. At the front of the building is the Instructional Media Center (IMC) which acts as a gathering space for groups of all sizes. Tiered seating is built into the corner and extends up towards large windows which offer sweeping views of the natural surroundings. This imaginative space is ideal for young learners.

The school is also home to the nation's first SmartLab dedicated to primary age students. Here, students explore STEAM (Science, Technology, Engineering, Arts, and Math) through project-based learning and applied technology. Coupled with adaptive furniture and hands on activities, this space supports the District's goal of providing students with an extraordinary learning opportunity.

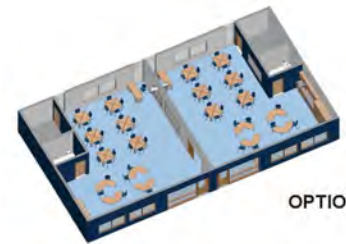
Schematic Classroom Plan | Option A



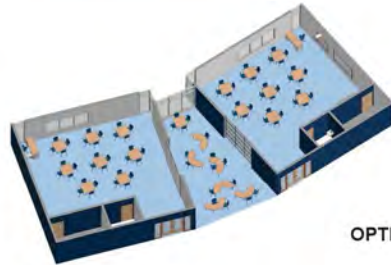
Schematic Classroom Plan Comparison



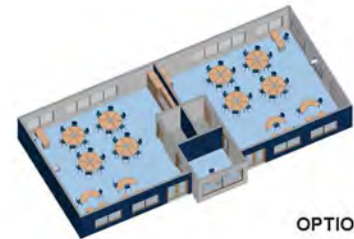
OPTION A



OPTION B



OPTION C

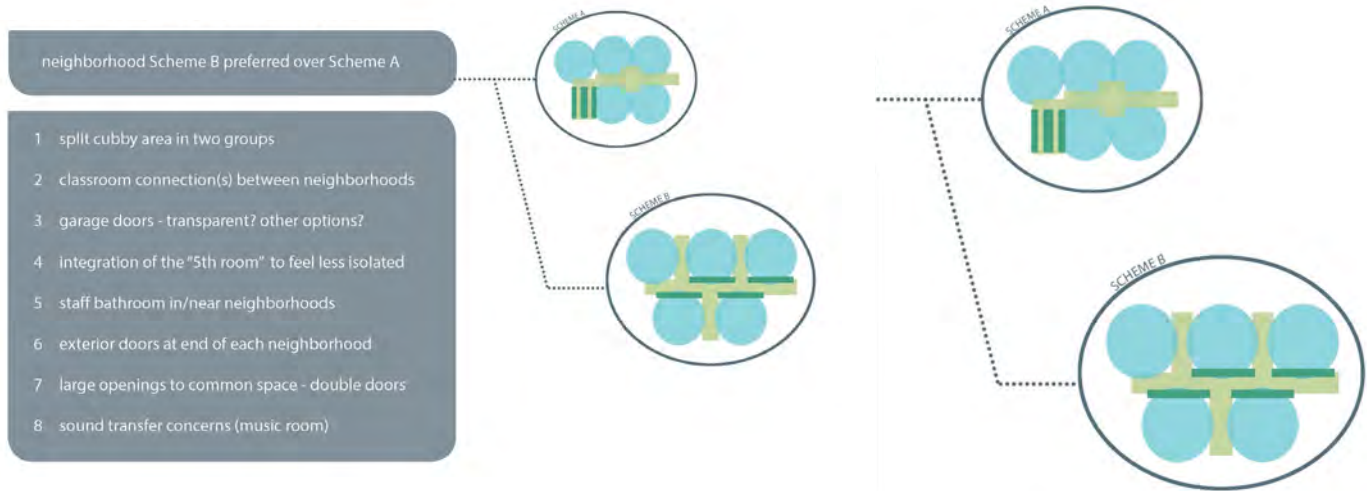


OPTION D

EDUCATIONAL ENVIRONMENT

Spaces Tailored to Students

In order to alleviate hallway congestion, and aid teachers in supervising their students, cubbies are confined to their own nook within each wing. These alcoves were designed specifically so that they would not inhibit collaboration or cut-off teacher visibility. The cubbies also feature ample storage space to keep the alcoves organized and the Pre-K cubbies additional space in between units to give the youngest students additional room.



K-2nd Grade Wing Cubby



Pre-K Wing Cubby

EDUCATIONAL ENVIRONMENT

Adaptable & Flexible Learning Spaces

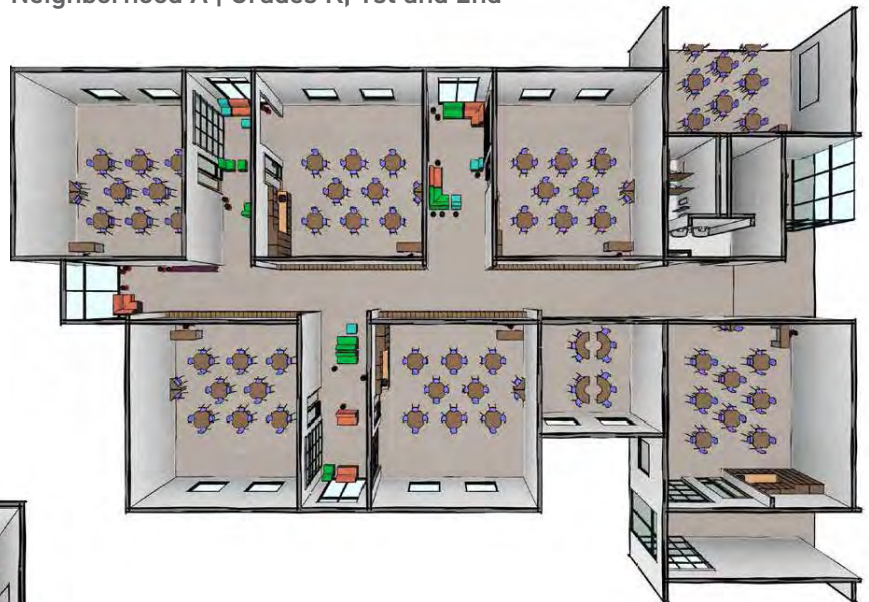
The various 'Hubs of Learning,' help to support the school's mission to serve a variety of learning and teaching styles as well as providing the staff with flexible spaces that can adapt for a number of different situations.

Scattered throughout the classrooms as well as the Town Square, impromptu meeting spaces were added that were included in the design as a special request by the staff members. These spaces are utilized for individual student meetings. Additionally, the design team included built-ins and playful architecture wherever possible. These innovative design solutions help connect students to the environment.

Flexible and movable furniture pieces can be found in collaboration spaces as well as in the glazed alcoves between classrooms. These unique furniture pieces allow staff members to configure the collaboration spaces to best fit the group that is utilizing the space.

All core academic classrooms feature two garage doors that open to the next classroom to allow for co-teaching and group lesson opportunities. The doors help to foster flexibility and collaboration between classes and within the individual classrooms.

Neighborhood A | Grades K, 1st and 2nd



Neighborhood C | PreK - Early Childhood



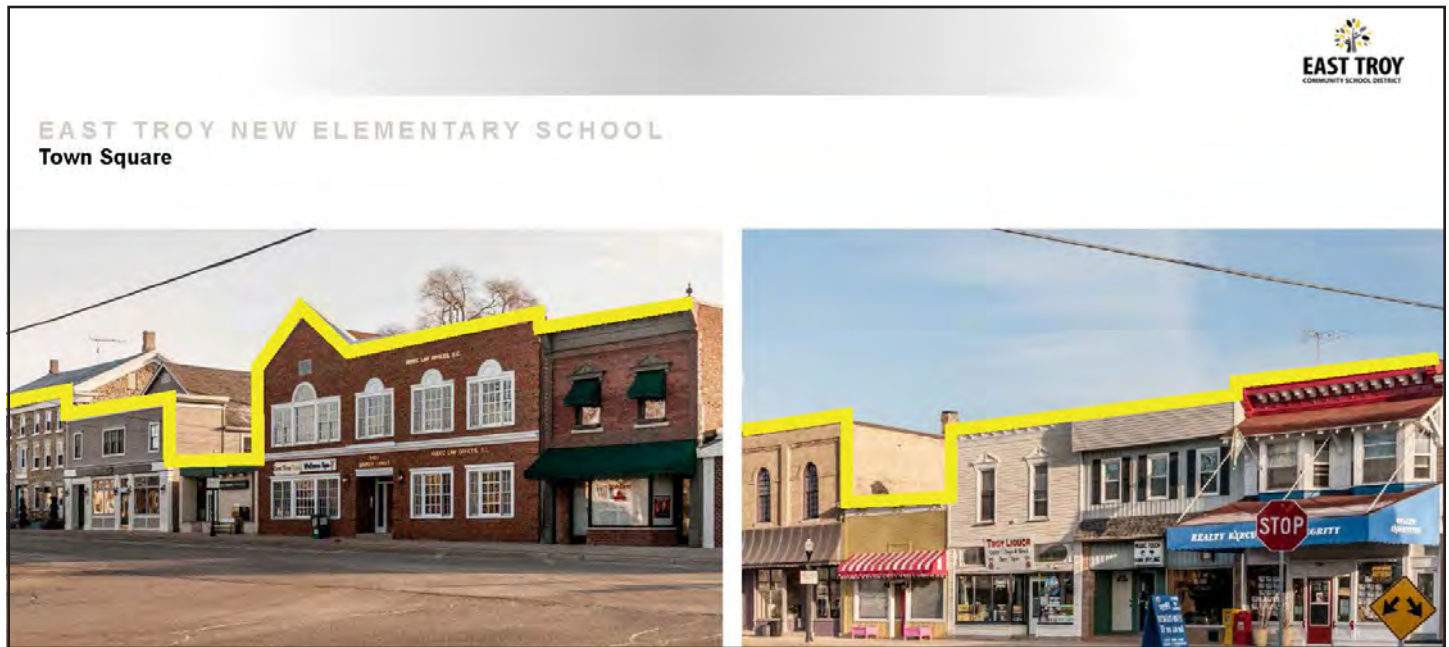


TAB 6 | PHYSICAL ENVIRONMENT

PHYSICAL ENVIRONMENT

Physical Attributes

Little Prairie Primary School's design features a truly unique concept, in that the building is inspired by the surrounding community and nature of the East Troy area. The school's design seamlessly blends from the interior to the exterior through material, furnishings, and color choices. Design choices align with an overall "nature" theme and were integrated throughout. A color palette of green, yellow, teal, and blue were chosen to represent elements (grass, sun, water, and sky) and can be found in each wing of the school. The colors not only echo the building theme, but also act as a means of wayfinding for students, staff, and visitors. The building concept helps to inspire students to learn and grow in various ways and allows teachers to manipulate spaces and adapt them for different learning styles.



Town Square

Little Prairie's Town Square is the largest shared learning space in the building. The Town Square houses the cafeteria, access to specials (Art, Music, Gym, SmartLab), as well as an interactive tree. The architectural features within the space symbolize the store fronts and building shapes of the East Troy Town Square.

The nature theme is extended throughout the Town Square (cafeteria) via the interactive tree, clouds, and reflections. The tree is an extension of the District logo and incorporates the building's four theme colors. It creates an exploratory learning space for students that supports the District's mission of providing all students with the opportunity to learn through collaboration and critical thinking. The tree trunk has four different areas: interactive touch screen, Lego exploration, arts and crafts, and play area. Tree branches, leaves, and clouds were created to spark student's imagination and creativity. Each cloud is reflected onto the floor using different colored rubber tiles.



PHYSICAL ENVIRONMENT

Town Square (continued)

The Town Square was created not only to honor the historic town in which the school is located, but it is also meant to help inspire young learners. Because the tree at the center of the Town Square represents growth, students are inclined to explore learning in new and different ways. The teachers at Little Prairie are also inspired to push the boundaries of traditional learning and pursue new teaching styles that allows students to learn at their own pace.



PHYSICAL ENVIRONMENT

Specialized Spaces | Art, Music and Instructional Media Center (IMC)

Located off of the Town Square are the school's specialized environments - art, music, gym, Instructional Media Center and SmartLab.

The art classroom includes kiln and cabinetry designed with paint splatters to appeal to students. The music classroom is equipped with sound panels and include music risers that are specially designed for primary age students. The gymnasium has a full size basketball court, dividing curtain, and set of bleachers that will be utilized during family and community events.



The Instructional Media Center (IMC) is one of the larger learning spaces in the school and acts as a gathering space for groups of all sizes. The space is equipped with flexible seating was designed to not only provide student choice in where and how they work but what they are working on (flexible learning). The IMC is be utilized for, STEAM instruction, Project-Based Learning (PBL) activities, as well as book checkout. Tiered seating is built into the corner and extends up towards large windows which offer sweeping views of the natural surroundings. This imaginative space is ideal for young learners.



PHYSICAL ENVIRONMENT

Specialized Spaces | SmartLab

Little Prairie's SmartLab is the first in the nation completely dedicated to primary-aged children. SmartLabs are an engaging program where students explore STEAM (Science, Technology, Engineering, Art, Math) through project-based learning and applied technology. It's a fully-integrated learning environment where everything from curriculum, activities, hands-on assessments, technology and furniture all work together to support hands-on, minds-on learning. Coupled with adaptive furniture and hands-on activities, this space supports the District's goal of providing students with an extraordinary learning opportunity.



Community Focused Spaces

A key aspect of the color design at Little Prairie was incorporating the building's natural surroundings using paints, carpets, and other finishes to indicate grass, sun, water and sky in each of the respective educational wings. The blue, green, and teal wings contain at least one 5K class, one 1st grade class, and one 2nd grade class. The multi-grade wings support personalized learning through the 5 C's (Content, Collaboration, Communication, Creativity, and Critical-Thinking) and help to garner a sense of community not only in the classroom but also between each wing.

All core academic classrooms have two garage doors that open to the adjacent classroom. These doors allow for team teaching opportunities and flexible spaces that can adapt for various lessons. Natural light was also vitally important to the design of this building, and the design team successfully utilized windows and skylights throughout both academic and shared spaces to allow areas to be adequately lit without using electricity.

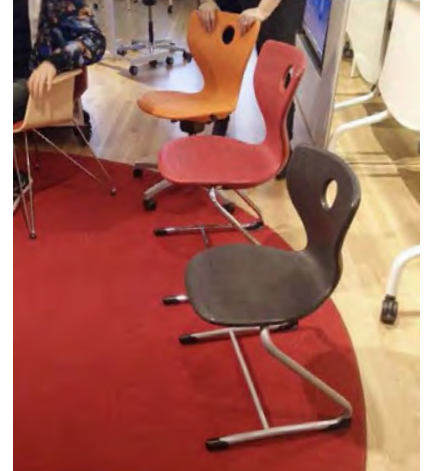
The staff also requested flexible, movable furniture for these spaces. The break-out nooks which can be found throughout the building help to acknowledge that learning is not static but rather fluid and encompasses various factors.



PHYSICAL ENVIRONMENT

Utilization of Flexible Furniture

There is a variety of furniture throughout the building to accommodate student needs and learning styles ensuring adaptability and flexibility. The administrative and design team extensively studied which types of furniture would best accommodate the learners at Little Prairie Primary School. This was accomplished by tours of similar school buildings and furniture showrooms. The District and design team strongly believed that to successfully complete the learning environments the team had envisioned, the furnishing choices had to be given the same consideration as every other decision in the building.



PHYSICAL ENVIRONMENT

Adapting to the School's Youngest Learners

The yellow academic wing of the school is home to early childhood and four-year-old kindergarten students. This wing is tailored specifically for the school's youngest learners. Each classroom is equipped with private restrooms so the students do not have to leave the room to use the bathroom. Additionally, these classrooms feature lower height furniture and lower window sills to accommodate the young students. Outside of the classrooms are student cubbies that were designed with more "wiggle room" as well as additional storage space above each cubby for teacher resources. At the end of this wing is a designated waiting area for half-day 4K students to wait safely for their rides home.



PHYSICAL ENVIRONMENT

Shared Greenspace and Playgrounds

With a goal of creating an elementary campus to assist with efficiency and sustainability, an open green space between Prairie View Elementary School and Little Prairie Primary School was planned. The green space will be enjoyed by students during instruction, recess, school events, and much more. The outdoor classroom has tiered seating that provides an opportunity to take learning outside. The space will not only inspire collaboration between the two elementary buildings but district-wide. The playground was designed with student size and developmental needs in mind, accommodating for 4K/5K students and 1st/2nd grade students.

This space can be utilized by the community for multiple purposes and provides visitors sweeping views of the surrounding natural landscape in East Troy.





TAB 7 | RESULTS OF THE PROCESS

RESULTS OF THE PROCESS

A Place for All Learners

The Little Prairie Primary School design team was ultimately charged with creating a space for the District's youngest learners where they would feel at home, safe, comfortable and a part of their community – both at school and in East Troy.

The District met its educational goals and objectives by including large community-centered spaces, numerous collaboration areas equipped with flexible furniture and 21st Century classrooms into the design of this new building.

The inspiring architecture, playful colors and outdoor space not only help to create unique learning opportunities for students but also allow for them to feel comfortable and empowered to explore in a fun space that can be adapted for many learning styles.

Overall, the design of the building exceeds the goal of competency-based learning of the District set forth at the beginning of the project. Now, Little Prairie Primary School is a one-of-a-kind environment where students and teachers can grow for years to come.



RESULTS OF THE PROCESS



RESULTS OF THE PROCESS

