

2017 A4LE

LE Solutions Planning & Design Awards

LAKE & PENINSULA SCHOOL DISTRICT

Tanalian K-12 School

Port Alsworth, Alaska

Tanalian K-12 School is the singular educational facility in the remote community of Port Alsworth, Alaska. The original building was critically undersized for the student population and was suffering from significant building system deficiencies. The program response includes major renovations to the existing space and doubling the size of the original wood-framed structure from 9,200 SF to 20,500 SF, adding two additional classrooms, and enlarging the multi-purpose gym/cafeteria.

Port Alsworth is located within one of the most scenic areas of Alaska, Lake Clark National Park and Preserve. Accessible only by plane, the remote village is approximately 100 miles southwest of Anchorage, Alaska's largest city. The remote location created logistical challenges, requiring careful planning between the design team and general contractor.

The architects engaged the entire community during programming and design to transform the crowded, outdated school into their vision of a community facility. Family members and staff were quick to embrace key concepts that focused on agile, flexible spaces and supported hands-on learning and collaboration. The result is a dynamic learning environment with space for individual, small, and large group instruction. Garage doors, sliding doors, and open areas provide a variety of learning opportunities to best suit each individual's learning style.

Occupancy Date	August 2015
Use (eg. grades housed)	Kindergarten - 12 th grade
Design Capacity (# of students)	75
Site Size (acres)	10
Gross Area (Sq. Ft.)	9,200 SF original/11,300 SF addition
Space per Pupil (Gross)	266 SF
Site Development Costs	\$1 million
Construction Costs	\$9 million
FF&E	\$.5 million
Total Cost	\$10.5 million





SIGNATURE PHOTO

Tanalian K-12 School



AIR STRIP TO THE NORTH

ROAD

PARKING

ORIGINAL SCHOOL

ADDITION

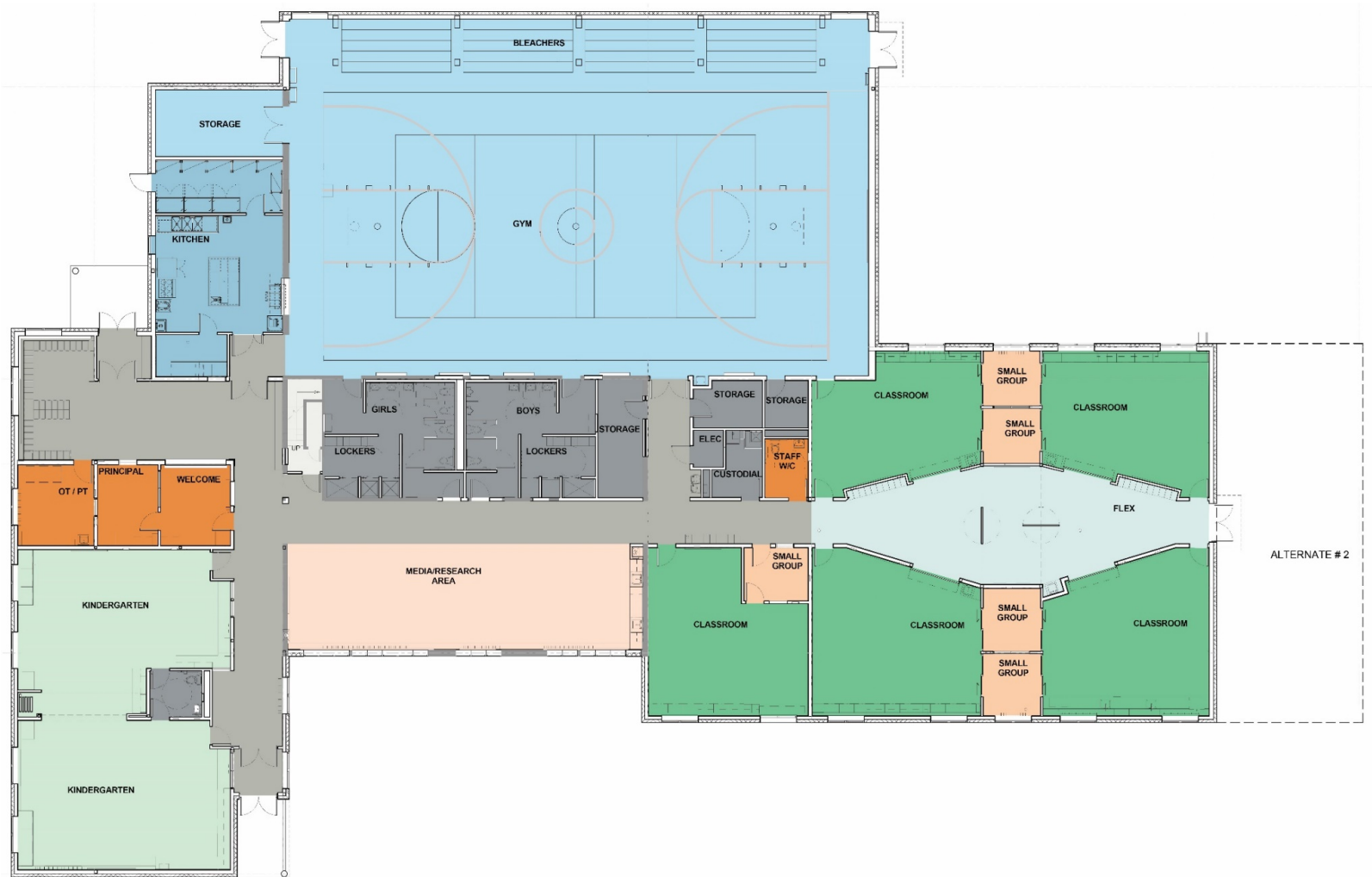
ADDITION

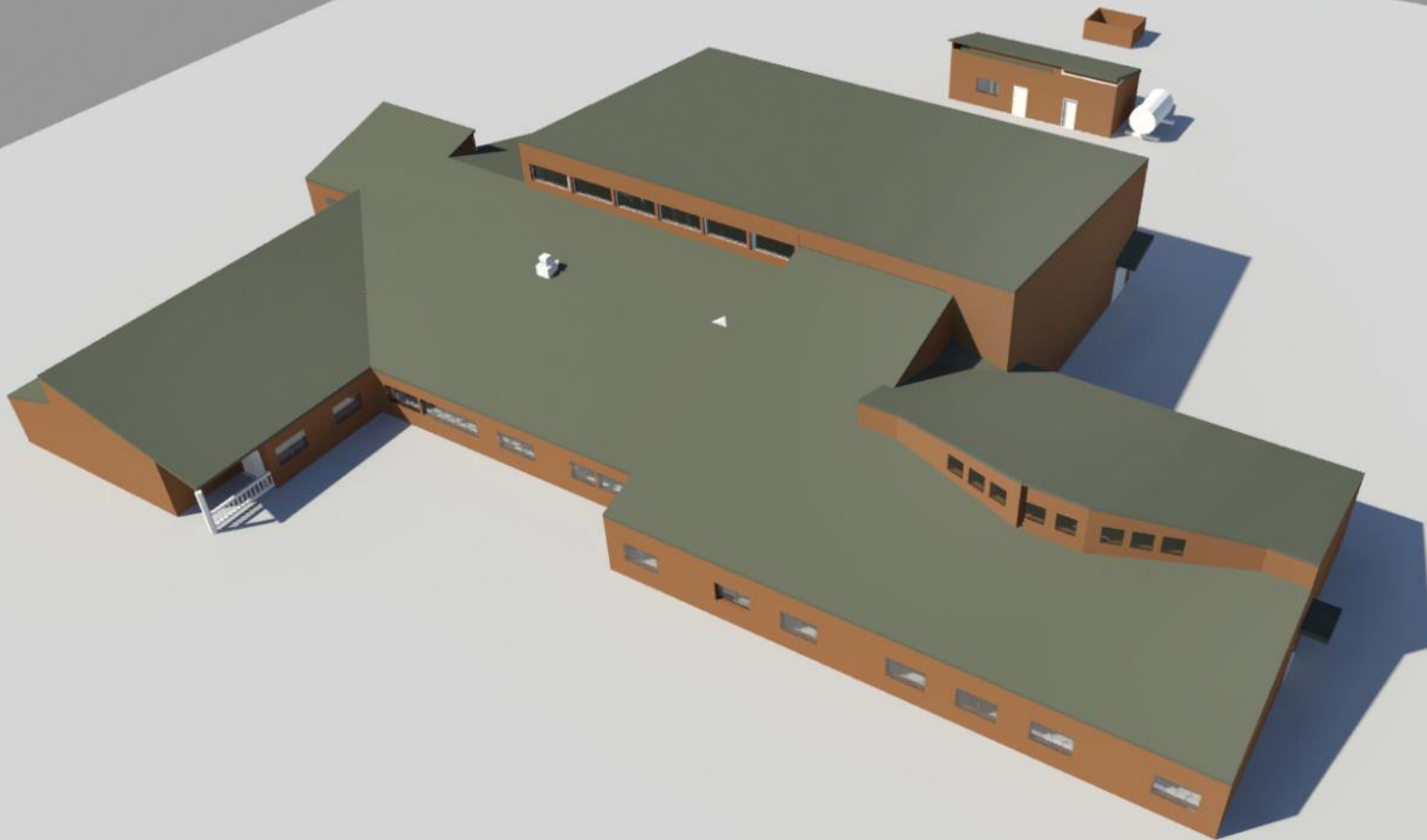
PLAY AREAS

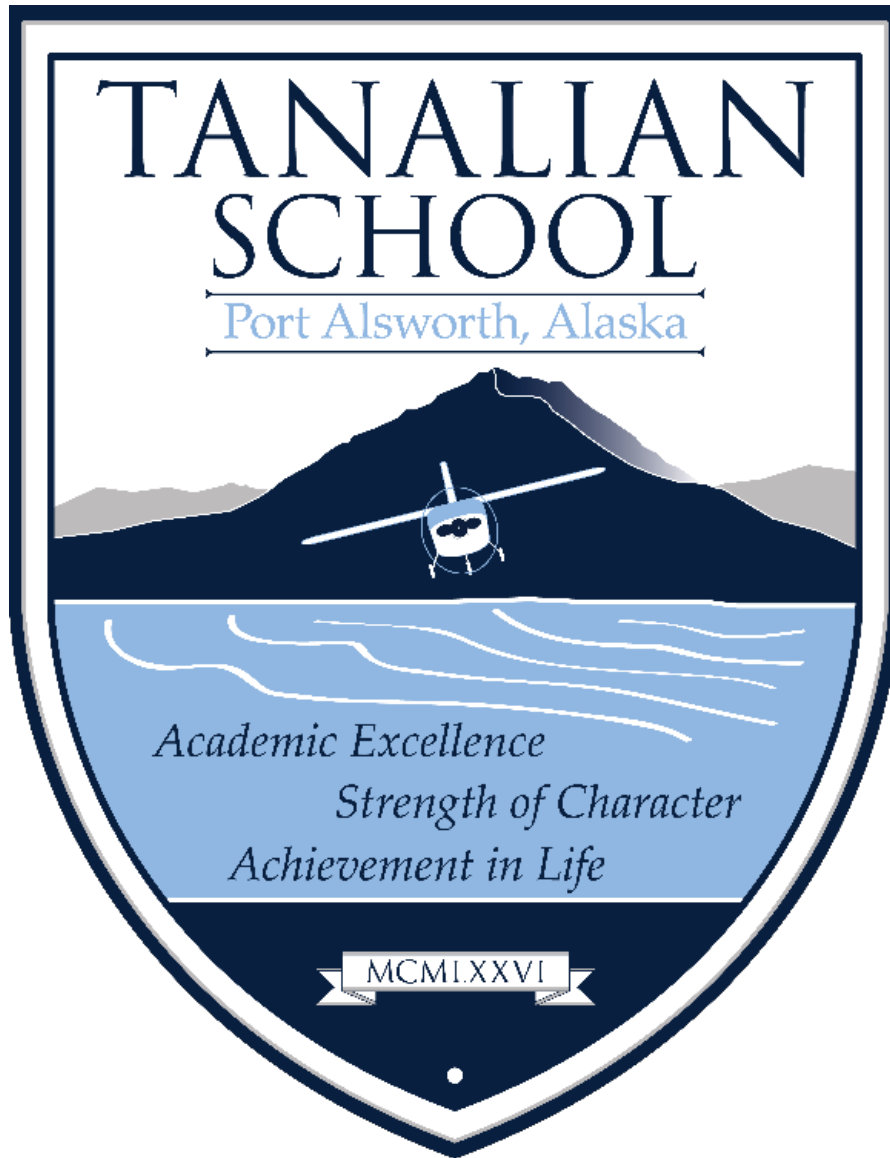
TEACHER HOUSING

TEACHER HOUSING

ROAD







The community of Port Alsworth is particularly cognizant of their values being supported within the school setting, as the school is treated as an extension of their homes. The planning process started with a community potlatch and through several meetings to refine the school program and design. From prioritizing use of garage doors and open classroom settings, to being involved in the selection of colors and finishes, the passionate, close-knit community was interested in every aspect of the project. The design team encouraged their involvement and buy-in, resulting in what is truly a community school.





Key to the transformation of the crowded school was engaging the entire community in the programing and design process. The design team held engaging public meetings that helped shaped the overall design. The architects listened to the community outline their educational needs and learn about the uniqueness of Port Alsworth.



The addition and renovation project was designed for a student population of 75 and to support an educational program that is individualized for each student. Small user groups worked on different aspects of the design that most interested them.

The facility program included additional classroom spaces not to exceed 12 students in order to keep the teacher to student ratios low. Ample flexibility and spaces for individual or small group work was a top priority. Main classrooms are connected to a central, flexible space, rather than a hallway. Overhead and sliding glass doors can be opened to expand each classroom as needed.




Tanalian is a learning-based school whose population has significantly grown and is expecting continued growth. The educational program is centered around every child having an individualized educational plan and meeting benchmarks on his or her own timeline.



As the largest meeting space in the community, the gym gets year-round use for community potlatches, meetings, and performances. The gym space was expanded to be full-sized to better accommodate the community activities, including open access to the kitchen.






The traditional library was transformed into a “maker lab,” where students can do research and have an opportunity for hands-on experimentation and creation.

Port Alsworth is located within one of the most scenic areas of Alaska, Lake Clark National Park and Preserve. The remote village is approximately 100 miles southwest of Anchorage, the state's largest city. The town sits next to Lake Clark and is hemmed in by mountains, making small planes the necessary means of traveling to and from the community. Both the remoteness and the beauty of the area influenced the design.




The new addition was built surrounding the original school, providing opportunities for every classroom to have exposure to natural sunlight and views of the surrounding wilderness. Use of clerestories and high bay windows also enhance natural daylighting throughout the school.





Community members desired a supportive family atmosphere with positive interaction between siblings. Age-appropriate spaces are provided while positive connections and interactions between older and younger students are made possible in the common areas.



All students benefit by observing the learning that is taking place throughout the school



The remoteness of the village created a complex logistical challenge and required careful planning between the design team and the general contractor. The project required several means of transportation, including a barge from Seattle to Anchorage, truck transport to Homer, barge across the Cook Inlet, truck transport to Lake Clark, and a final barge to Port Alsworth. The remaining 40% of materials were flown to the site.



“[The design team] engaged the entire Port Alsworth community in the programing and design process to transform their crowded old school. They were quick to embrace the key concepts and the result is a dynamic learning environment with space for individual, small, and large group education. The design fulfilled the school and community’s vision for their new facility.”

~ Kathy Christy, Project Manager, Lake and Peninsula School District

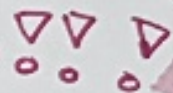
“[The design team] engaged the entire Port Alsworth community in the programing and design process to transform their crowded old school. They were quick to embrace the key concepts and the result is a dynamic learning environment with space for individual, small, and large group education. The design fulfilled the school and community’s vision for their new facility.”

~ Kathy Christy, Project Manager, Lake and Peninsula School District



The new school encapsulates the community's needs and desires. The community engaged with the architect in collaborative town-style meetings to communicate their needs and desires to best support the School District's specialized educational program. The resulting learning environments encourage break-out team-based learning and places that support student curiosity, individual learning, and industrious spirit—the way of life in rural communities. The community of Port Alsworth has expressed that the school truly supports their needs.



Thank You ^{for your contributions} toward our new
SCHOOL!  -Zoe Smith

