

# BALDWIN HIGH SCHOOL WALLACE H. FUJII LIBRARY





*Fig. 1. Grounds with banyan trees.*

BALDWIN HIGH SCHOOL  
WALLACE H. FUJII  
LIBRARY

# EXECUTIVE SUMMARY

The Wallace H. Fujii Library at Baldwin High School replaces the existing school library at the historic High School with a larger, modern facility to support the educational needs of students and the curriculum requirements for the High School.

The original library was over 45 years old and lacked sufficient space for housing a collection of books, periodicals, reference materials, and general interest materials for a high school. The original library occupied a portion of a classroom building and was not designed to protect the collection from outside humidity, moisture, dust, and salt air. Sustainability was also a major component in the design of this Library facility.

WAILUKU  
MAUI, HAWAII



The new 14,000+ square foot building consists of a main library space for reading, study, book stacks, an archive area, librarian's office and circulation desk. As part of the main library is a teacher workroom, student conference room, and staff restrooms, serving both the Library as well as the general school population. The project also includes a media component, providing space for multi-media production, media control signal processing, resource centers and a technician's office.

## SCOPE OF WORK AND BUDGET

Completion Date: 2012

Project Type: Education - Library

**14,000+**

Square Feet

**\$9,000,000**

Construction Value

Fig. 2.  
Main library space.



*Fig. 3. Reception area with work tables.*

The new library building serves a multitude of requirements. The main library area's primary purpose is to serve library functions for the school's students. The library is open for student use during the morning, recess, lunch recess, activity period, and after school.

# SCHOOL AND COMMUNITY ENGAGEMENT

Numerous (monthly for six months) on-site design workshops / charrettes were held with all project stakeholders to develop the project program and design. Stakeholders included School administration, Teachers, Librarians and custodial staff. The final design is a result of collaboration amongst project stakeholders. The collaborative effort successfully responds to the project program, functional requirements, site conditions and sustainability. Prior to the development of final design, alternate plans were studied, including a two-story scheme.

The design of the new building was of the utmost importance to the community because of the historical implications of the campus. The entire campus is listed as a historic property on State and National Registers of Historic Places (State Historic Preservation Division). Per the State Historic Preservation Office (SHPO), any new buildings must be respectful of the existing historic building, while not mimicking the surrounding buildings and their architectural details. The new building clearly is intended to be representative of the time in which it is built and does not imitate the existing historical structures.



*Fig. 4. Entrance with banyan trees.*





The design team collaborated with the school, community and SHPO to select the buildings location within the campus. The new building's location was chosen to nestle into the existing banyan courtyard, giving students and teachers easy access to the new facility.

The banyan trees were a focal point to the courtyard and the building design is enhanced by the trees, which shade part of the roof and provide thermal comfort. The umbrella-like reach of the trees made a two-story plan impractical so a single story with gable roof was developed, taking into consideration the advice of tree experts on the future growth and span of the existing banyan trees.

# EDUCATIONAL ENVIRONMENT

The project's building design was part of a new philosophy for educational programming and methodology in schools. The design explores several new types of media spaces and adjacencies, and considers the overall purpose of school libraries going forth. Libraries have been in transition for a while, their functions adapting to the accessibility of online information. Addressing this transition with a system of spatial variability that could accommodate future, unknown uses was a primary driver in the project's design concept.



*Fig. 5. Main library space with acoustic baffles and clerestory windows.*



*Fig. 6. Site plan with new library and existing buildings.*

The resulting design is a simplified plan that exhibits clarity in the building's functions, organization, and a structure that supports library functions. This simplicity is accentuated by the length of the room and its large volume. Within this space, the design attempts a sense of play and wonder, integral to today's learning environments. The design team felt that a spacious volume could speak to the fundamentally aspirational idea of being a young adult in school and learning new things. This open space is also highly adaptable and can accommodate future uses and the ongoing development of technology in the 21st century.

Fig. 7. Media room.



Media components support the media technology and audio visual/media arts program at the school. Media rooms provides a place for multi-media services which includes video conferencing capabilities, networking, closed circuit TV's, multi-media reproduction, studios, cyber cafes etc. Daily classes are held in various rooms for the students to work in large or small groups or individually on classroom assignments related to computers and audio/media technology.

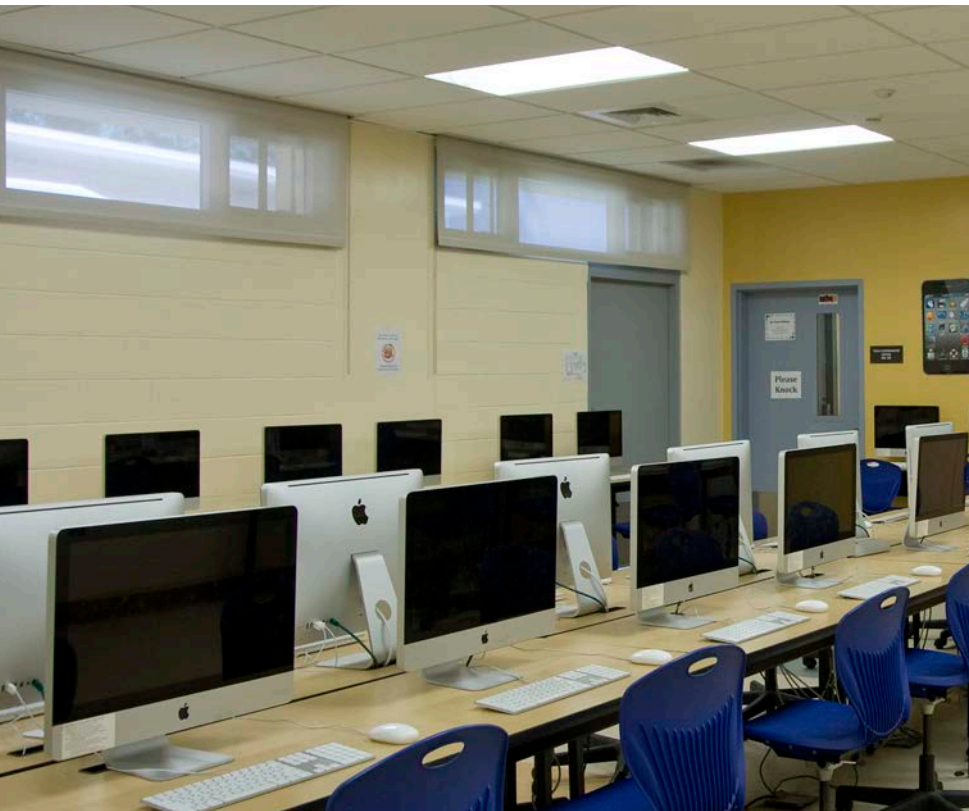
The Workroom/Production Room serves both the librarians and teachers of the new library building as well as all of the teachers and administrators at Baldwin High School during work hours. It serves as a workroom, lounge for teacher breaks and an area to hold small staff conferences. During after school hours, the teacher workroom and the conference room are also expected to serve all of DOE schools in Maui County. It is the hub to hold various faculty conferences and workshops. The conference room supports both the main library and teacher workroom for various conference activities. The conference room also hosts after school conferences for use by the general public.

*Fig. 8. Media Center.*



# PHYSICAL ENVIRONMENT

The library was designed to Hawaii High Performance School Guidelines and Leadership in Energy & Environmental Design (LEED) for Schools. The project was designed to maximize energy performance by the use of natural daylighting and energy efficient building systems. The natural daylight provided by the large skylight in the main library space is diffused and dispersed evenly throughout by curved acoustical baffles. Natural light is also provided into the space thru clerestory windows high on the walls.



The Media Room was designed with cutting edge technology to create a state of the art model for future Department of Education Media Rooms. This area supports the school's closed circuit TV broadcasts and other video production activities. The media center provides media related curriculum for the students and is intended to be the model media / visual arts facility for State of Hawaii, Department of Education on Maui.

*Fig. 9. New workstations.*

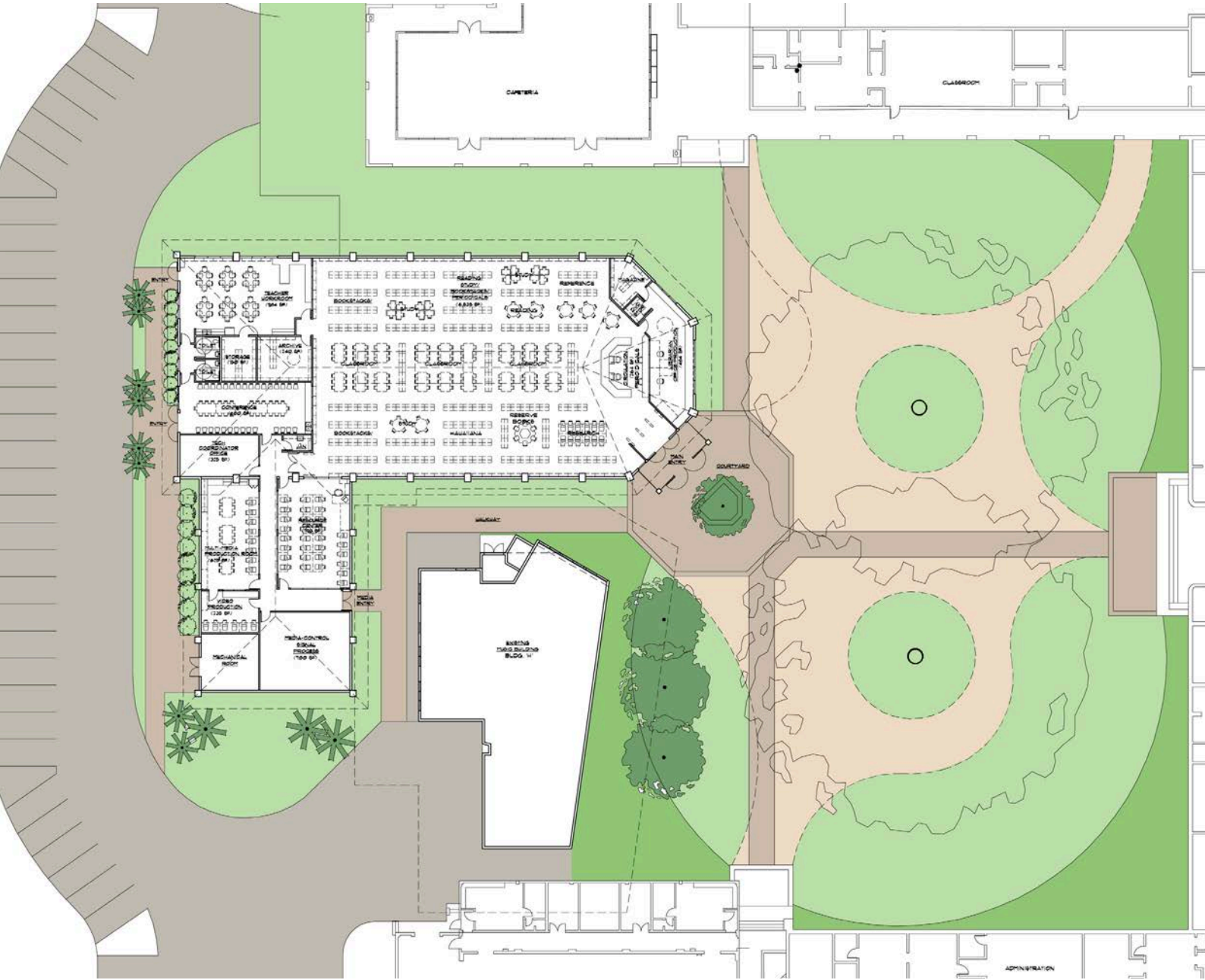


*Fig. 10. Louver detail.*



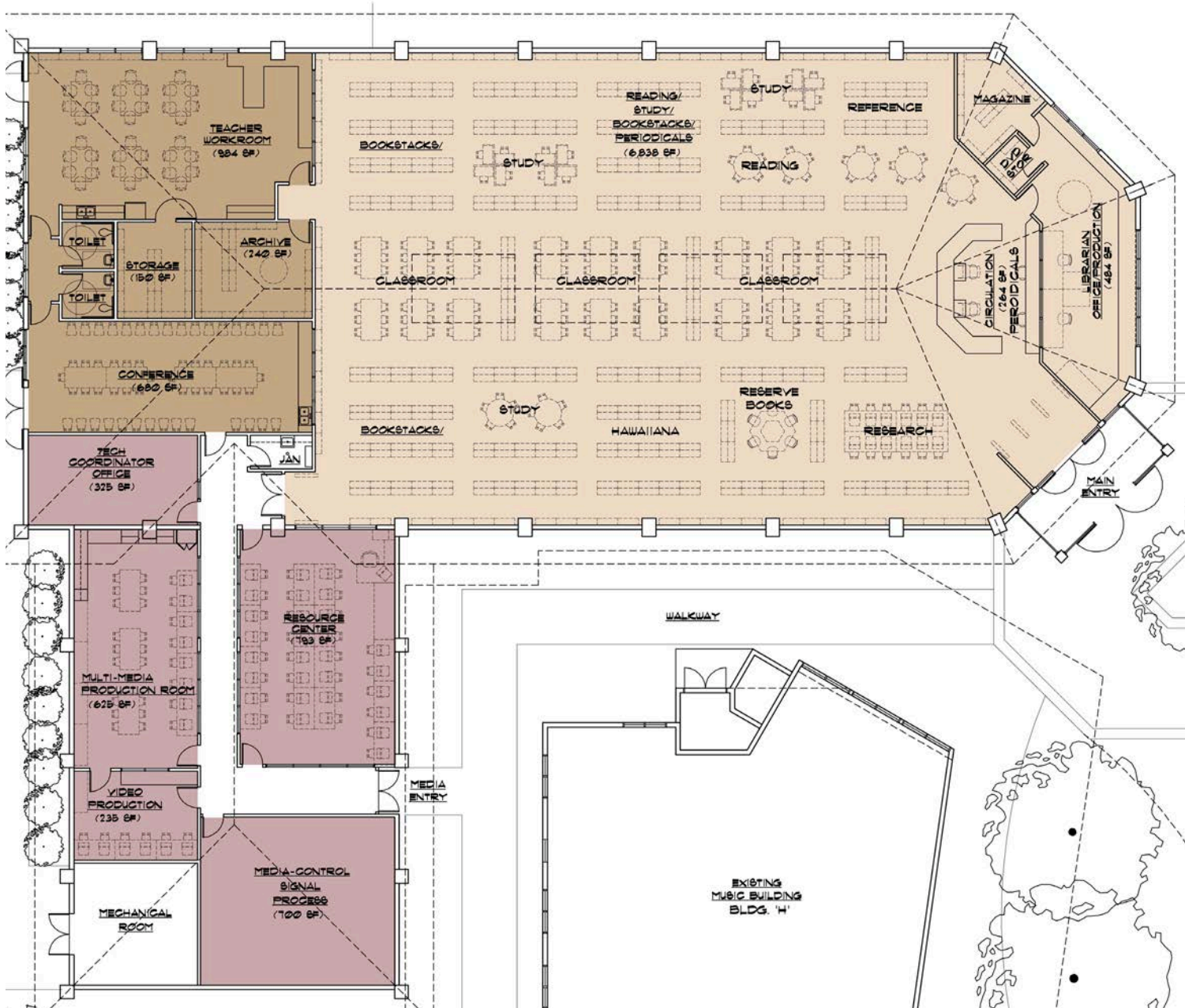
*Fig. 11. Skylight and insulated ceiling.*

# SITE PLAN





# FLOOR PLAN





*Fig. 12. Grounds with Integrated Soil Control Mat*



*Fig. 13. Indigenous plantings.*

## RESULTS OF THE PROCESS AND PROJECT

The new Library provides the school with a new, modern Library and Media Center. On a typical school day, approximately 450-550 students use the library, which is almost twice as much as originally anticipated. One class is held in the library during class periods, while other students may be working on class assignments or using available resources (reference materials, computers, internet access). The library is open between the hours of 7:15 AM and 3:00 PM, and also serves as a venue for faculty to hold teacher conferences, special activities and workshops. The main library doesn't have any dividing walls, maximizing flexibility for current and future use.

**2017 LEsolutions-- Awards  
Project Data: Confidential Information**

<b>Project Name</b>	BALDWIN HIGH SCHOOL LIBRARY
<b>School District Name</b>	MAUI DISTRICT
<b>Project Address</b>	1650 KAAHUMANU AVENUE
<b>City/State/Zip/Country</b>	WAILUKU, MAUI, HAWAII 96793
<b>Superintendent/President</b>	KATHRYN MATAYOSHI, SUPERINTENDENT KEITH HAYASHI, DEPUTY SUPERINTENDENT
<b>Award Category— Please Identify the category of award.</b>	NEW LEARNING ENVIRONMENT

<b>Submitting Firm:</b>	
Project Role (Architect, Planner, CM, Other)	DESIGN PARTNERS INCORPORATED (ARCHITECT)
Contact for this Award Application	KENDALL ELLINGWOOD
Title	SENIOR PRINCIPAL
Address	1580 MAKALOA STREET, SUITE 1100
City, State or Province, Country	HONOLULU, HAWAII 96814
Phone	808-949-0044
Email Address	kendall@designpartnersinc.com

<b>Joint Partner Firm:</b>	
Project Role (Architect, Planner, CM, Other)	
Project Contact	
Title	
Address	
City, State or Province, Country	
Phone	
Email Address	

<b>Other Firm:</b>	
Project Role (Architect, Planner, CM, Other)	
Title	
Address	
City, State or Province, Country	
Phone	
Email Address	

<b>Other Firm:</b>	
Project Role (Architect, Planner, CM, Other)	
Title	
Address	
City, State or Province, Country	
Phone	
Email Address	



## 2017 LE Solutions Planning and Design Awards

### Photo Release Form

Please initial all that apply

Name of Project BALDWIN HIGH SCHOOL - WALLACE H. FUJII LIBRARY

Location of Project WAILUKU, MAUI, HAWAII

Occupancy Date, if applicable CONSTRUCTION COMPLETED FOR FALL SCHOOL YEAR, 2012.

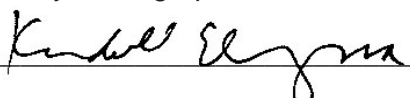
The Association for Learning Environments (A4LE) has our permission to:

- Send photos electronically to jury members (required for entry).
- Display photos in the award winners' area of the website, if selected as a finalist.
- Display photos on other sections of the website as representative A4LE projects.
- Print photos in A4LE newsletters.
- Print photos on A4LE marketing materials, i.e. brochures, awards, call for entries, etc.
- Print photos and project details in the A4LE Design Portfolio, if selected as a finalist.
- Special projects with prior permission.

Please Note: A4LE maintains an in-house archive of school designs as part of our research library. Your information will be entered and recorded as one of those designs.

Firm DESIGN PARTNERS INCORPORATED

Responsible Party/Photographer PROPERTY OF DESIGN PARTNERS INCORPORATED

Signature  (KENDALL ELLINGWOOD)

Date of Release 03-30-2017



 DESIGN PARTNERS  
INCORPORATED